

B. Chuilon, S. Mistry, R. Andrews, R. Verhoeven and Y. Xue

Key Enabling Design Features of the ITER HNB Duct Liner

Enquiries about copyright and reproduction should in the first instance be addressed to the Culham Publications Officer, Culham Centre for Fusion Energy (CCFE), Library, Culham Science Centre, Abingdon, Oxfordshire, OX14 3DB, UK. The United Kingdom Atomic Energy Authority is the copyright holder.

Key Enabling Design Features of the ITER HNB Duct Liner

B. Chuilon¹, S. Mistry¹, R. Andrews¹, R. Verhoeven¹ and Y. Xue¹

¹*CCFE, Culham Science Centre, Abingdon, Oxon OX14 3DB, UK*

Key Enabling Design Features of the ITER HNB Duct Liner

Ben Chuilon, Sanjay Mistry, Rodney Andrews, Roel Verhoeven, Yongkuan Xue

Culham Centre for Fusion Energy (CCFE), Culham Science Centre, Abingdon, UK

The Duct Liner (DL) for the ITER Heating Neutral Beam (HNB) is a key component in the beam transport system. Duct Liners installed into equatorial ports 4 and 5 of the Vacuum Vessel (VV) will protect the port extension from power deposition due to re-ionisation and direct interception of the HNB. Furthermore, the DL contributes towards the shielding of the VV and superconducting coils from plasma photons and neutrons.

The DL incorporates a 316L(N)-IG, deep-drilled and water cooled Neutron Shield (NS) whose internal walls are lined with actively cooled CuCrZr Duct Liner Modules (DLMs). These Remote Handling Class 2 and 3 panels provide protection from neutral beam power. This paper provides an overview of the preliminary design for the ITER HNB DL and focusses on critical features that ensure compatibility with: high heat flux requirements, remote maintenance procedures, and transient magnetic fields arising from major plasma disruptions.

The power deposited on a single DLM can reach 300 kW with a peak power density of 2.4 MW/m². Feeding coolant to the DLMs is accomplished via welded connections to the internal coolant network of the NS. These are placed coaxially to allow for thermal expansion of the DLMs without the use of deformable connections. Critically, the remote maintenance of individual DLMs necessitates access to water connections and bolts from the beam facing surface, thus subjecting them to high heat flux loads. This design challenge will become more prevalent as fusion devices become more powerful and remote handling becomes a necessity. The novel solutions implemented to overcome this are detailed and their performance scrutinized.

The designs presented include tungsten caps that protect bolted and remotely welded connections by radiating heat away, and explosion bonded CuCrZr/Stainless Steel panels designed to reduce by a factor of 10 the eddy current torques caused by plasma disruptions.

Keywords: ITER; Neutral Beam; Duct Liner; High Heat Flux; CuCrZr; Tungsten

1. Introduction

The HNB system for ITER consists of two heating and current drive neutral ion beam injectors. Each beamline can inject up to 16.7 MW of beam power for 1 hour, with a current of 40 Amps and beam energy of 1 MeV. The proposed physical plant layout allows a possible third HNB injector to be installed later, taking the total injected power up to 50 MW.

Each HNB injector incorporates a Duct Liner assembly which protects the Tokamak Vacuum Vessel port and port extension from power deposition due to re-ionisation and direct interception of the beam. Furthermore, the DL also contributes towards the nuclear shielding of the VV and ITER Coils from nuclear radiation from the plasma. Of the many requirements fulfilled by the DL [1], two of them are key design-drivers, the solutions to which are presented here.

Firstly, the DL must be able to withstand localised heat flux power densities of up to 2.4 MW/m² originating from re-ionised and direct beam interception. The total power removed by the DL can reach 1.24 MW for the worst case beam scenario [1].

Secondly, the components that are subject to the highest heating loads must be remotely handled (RH). The Remote Handling Class for these items is Class 2, meaning that scheduled remote maintenance is not

required but unscheduled maintenance is likely. The remote handling operations required for maintenance of RH Class 2 panels include manoeuvring, cutting, welding, bolting and helium-puffing.

When combined, these requirements have proved very challenging for the design. In particular, protecting the bolts and RH water connections from the beam heat flux led to the employment of solutions that are novel when compared to existing neutral beamline designs.

2. Design Overview

The Duct Liner is split into two main parts that fulfil different functions. The first is the Neutron Shield, a thick stainless steel conduit that lines the inside of the VV port and is connected to the VV port extension flange. The second is a set of 35 copper alloy panels called Duct Liner Modules that are attached to the NS.

2.1. Neutron Shield

The primary function of the Neutron Shield is to provide nuclear radiation shielding for the VV and ITER coils. The secondary function is to provide structural support, water and thermocouple connections for the DLMs that are attached to it.

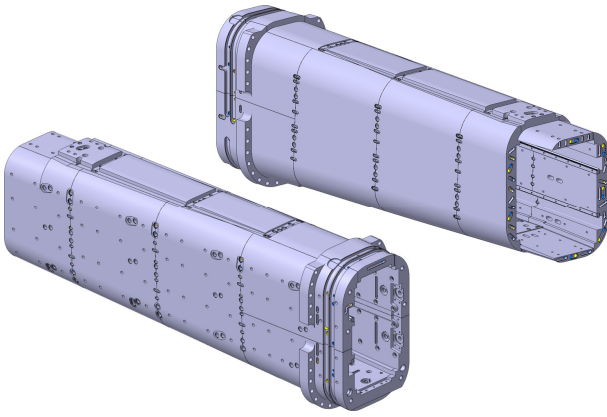


Figure 1. Duct Liner Neutron Shield

The neutron shield is manufactured from 316L(N)-IG stainless steel plates that are welded together to form a tapered rectangular tube of length 4.8m, width 0.9m and height 1.6m (Figure 1). The plates are deep-drilled to allow water to cool the structure and to deliver coolant to the DLMs.

2.2. Duct Liner Modules

The Duct Liner Modules provide a heat sink to remove unwanted heat from re-ionised or intercepted beam particles. The DLMs are all water-cooled and made from deep-drilled, CuCrZr-IG alloy plates.

All four sides of the NS are lined with 5 panels in the lengthwise direction (Figure 2). The LHS of the duct has three rows of smaller panels, which are separated by two grooves in which a pair of rails is located, to enable remote handling equipment to travel inside the duct.

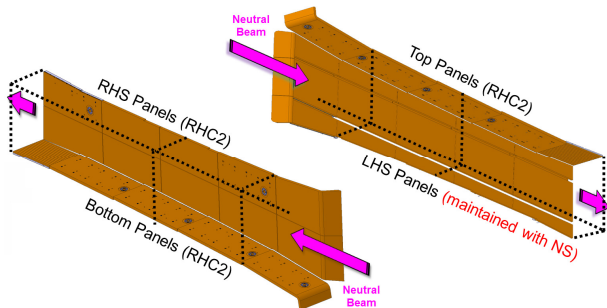


Figure 2. Duct Liner Modules arranged in the duct.

The panels vary in size but the majority of them are 1.3m by 0.5m, and 40mm in thickness. The water channels are deep-drilled along the shortest direction, to maximise the drilling accuracy (Figure 3). They are grouped into 4 parallel drillings that traverse the panel back and forth 5 times. Pockets are machined from the panel edges to provide coolant distribution manifolds and flow return paths, before being capped and welded.

Two of the key features of the DLMs are the bolted connections and the coolant connections. Both are exposed to the HNB power and both need to be remotely maintained. In both cases a tungsten “cap” is secured into the panels to protect the connections. One particular feature of the water connections is that the feed and return circuits are coaxial, whereby the return flows through an annular pipe section.

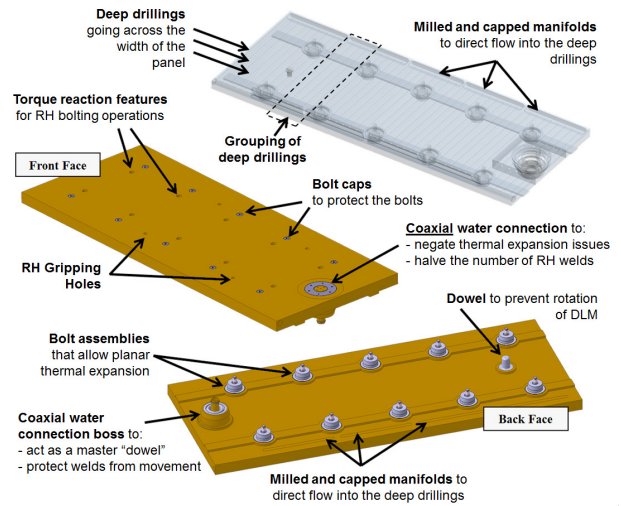


Figure 3. Duct Liner Module detail.

All DLMs use 10 bolts arranged at a standard pitch and separation, with torque-reaction features for remote handling operations. A further 4 threaded holes are present on the front face to allow the RH equipment to grip the panel and to provide a datum for the RH tooling.

2.3. Tungsten Bolt Cap Protection Assembly

The bolt cap is a small cylindrical part inserted in all the DLM bolt recesses and locked using a “bayonet-mount” spring-loaded system (Figure 4). The cap is 30mm tall with a maximum diameter of 22mm, and it has “feet” that slide into the DLM and provide the locking upon rotation of the cap.

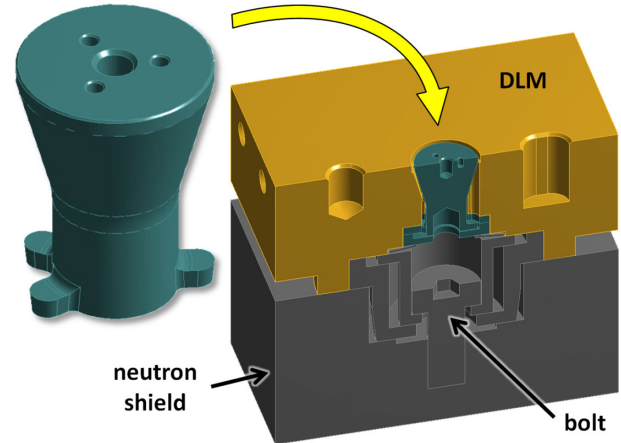


Figure 4. Tungsten bolt cap protection.

The cap works by reaching temperatures high enough to radiate all of the beam power landing on it to the neighbouring cooled CuCrZr surfaces, and also outwards to the other DLMs. In order to withstand the high temperatures involved, above 2000 °C, tungsten is used due to its very high melting point.

The contact points of the component are kept further away in the cooler regions at the foot of the cap. Parts in contact are also made from tungsten to withstand the high temperatures and provide a thermal break between the cap and the CuCrZr DLM, thus removing the risk of melting the copper alloy. A more detailed breakdown of the assembly can be found on Figure 5.

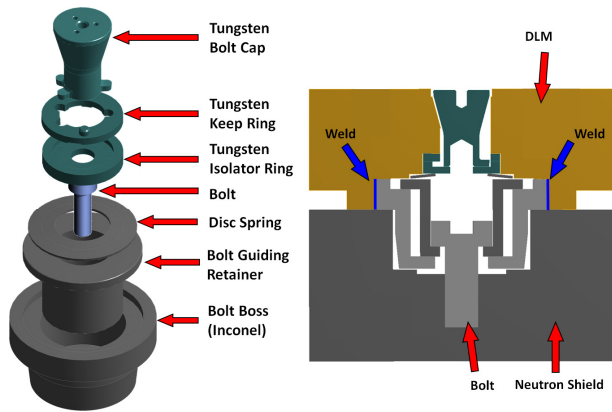


Figure 5. DLM bolting assembly.

The remainder of the bolt assembly is designed such that the bolt is captive and kept straight via the Bolt Guiding Retainer. Furthermore, the assembly allows up to ± 3 mm of lateral sliding for the DLM to expand thermally without placing the bolts in shear or bending.

2.4. Coaxial Flow Assembly and Tungsten Ring

The coaxial flow assembly relies on a single coaxial connection to feed and return water to the DLM. A tungsten ring is also used to protect the RH lip-weld which would otherwise be exposed to the beam power. The ring works in the same manner as the bolt cap.

There are two reasons for using a coaxial configuration. Firstly, it provides a single datum from which thermal expansion takes place, so no loads are placed on the coolant connections and welds during thermal expansion of the DLM. Secondly, the design halves the number of lip welds required, thus reducing the probability of leaks accordingly.

A cross-section of the assembly can be seen on Figure 6. The complete system, once pre-assembled, is comprised of 3 parts that fit onto the Neutron Shield. These are the DLM body (1), which requires several parts to be assembled and welded together, the Connector Cap (2) which is made of three parts welded together, and the Tungsten Ring (3).

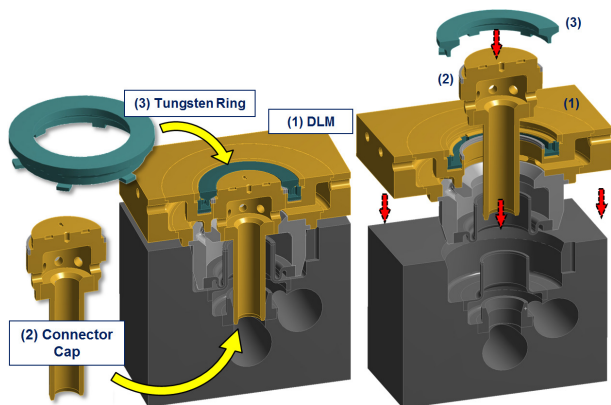


Figure 6. Coaxial water connection assembly.

Upon assembly the DLM is brought into place, after which an inner lip-weld is sealed (Figure 7). Then the Connector Cap is screwed into position, and a second upper inconel lip weld seals up the entire flow circuit.

Finally, the Tungsten Ring is inserted and rotated, where the spring loaded system keeps it locked in place.

Figure 7 shows a cross section of the assembly with the flow regions identified. To prevent internal leakage between the inlet and outlet coolant circuits, two crushable graphite seals are used in addition to tight dimensional tolerances in the relevant regions. The seals are integral to the DLM so new ones are always used in the event of a DLM replacement.

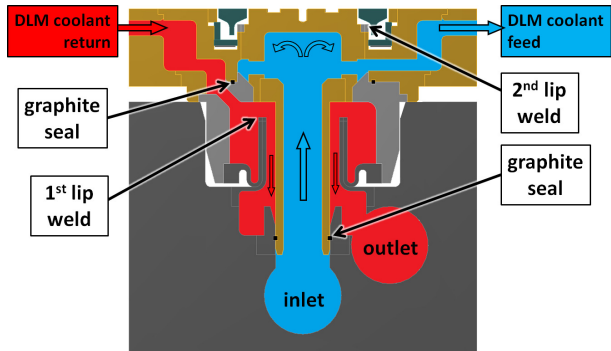


Figure 7. Coaxial assembly cross section.

The DLM assembly is comprised of a CuCrZr Keep Ring which is electron beam welded to the Flow Manifold, trapping the Tungsten Keep Ring, Tungsten Isolator Ring and annular Disc Spring in place (Figure 8). One half of the Inconel lip weld is also welded to the Flow Manifold, the latter of which splits the flow into two directions for the DLM flow feed and return.

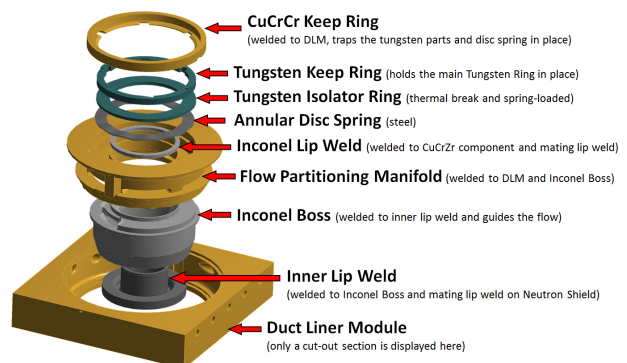


Figure 8. Coaxial assembly detail in the DLM.

A further Inconel Boss is welded on the bottom of the Flow Manifold to which half of the Inner Lip Weld is connected. The boss also directs the water flow appropriately.

2.5. Eddy Current Suppressing Panels

In the regions closest to the ITER plasma, rapid changes in the magnetic fields from the plasma during disruption events, of the order of 15 T/s, lead to large eddy currents being generated in all metallic parts. These then react with the steady magnetic fields from the ITER coils, causing large torques to be generated.

The DLMs most affected are those at the top and bottom of the Duct Liner, in the plane normal to the direction of the strongest magnetic field change. A standard solid CuCrZr panel in these regions would be subject to huge disruption torques reaching 170 kNm,

giving rise to bolt loads of up to 250 kN. These loads would be far too high for any panel to survive so eddy current mitigation solutions are required to reduce them. The design used on the Duct Liner makes use of two methods to achieve this.

The first is the use of a “sandwich” construction whereby a plate of CuCrZr alloy is explosion bonded to one made from 316L(N) stainless steel (Figure 9). As steel is a poor conductor when compared to copper alloy, the eddy current build-up is diminished as a result.

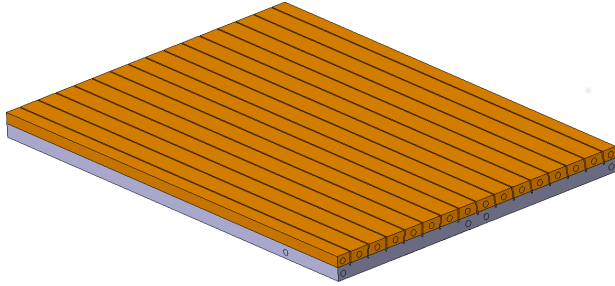


Figure 9. Eddy Current Suppressing DLM.

The second design feature is a set of machined grooves in the CuCrZr, reaching into the steel layer, thereby separating the CuCrZr layer into several long sections. The result is that it becomes more difficult for eddy currents to circulate in the copper alloy and hence the loads on the panel are diminished further.

3. Duct Liner Performance

3.1. Tungsten Bolt Cap Analysis

Under the worst case beam loading scenarios, the bolt cap will be subject to a thermal flux of 2.4 MW/m^2 . In this case it will reach a maximum temperature of 2283°C , which is $2/3^{\text{rds}}$ of the melting point of tungsten, 3422°C . These high temperatures mean that the tungsten will re-crystallize (above 1350°C) however the associated significant loss in mechanical properties is accounted for in its structural assessment, which finds the design integrity to be suitable.

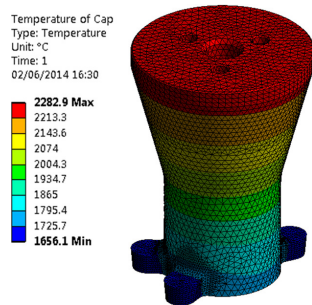


Figure 10. Tungsten bolt cap temperature.

The temperature of the Duct Liner Module is unaffected by the presence of the cap, reaching a maximum temperature of 295°C in a region away from the cap.

3.2. Tungsten Coaxial Assembly Ring Analysis

Again, under the worst case beam loading scenarios a thermal flux of 2.4 MW/m^2 is envisaged. In this case the tungsten ring would reach a temperature of 2110°C .

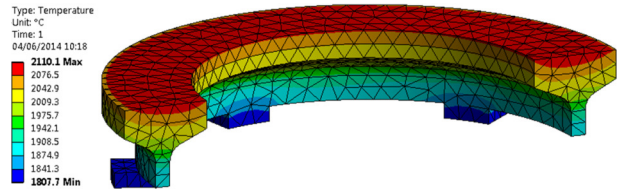


Figure 11. Tungsten ring temperature.

The DLM temperature in this case is only slightly affected by the coaxial assembly, reaching a maximum temperature of 319°C in the vicinity of the tungsten ring.

3.3. Eddy Current Suppressing DLM

The general behaviour of the eddy currents brought about by the design intent is that they only flow in one direction in the CuCrZr sections, and must penetrate the stainless steel structure beneath in order to complete a current loop (Figure 12).

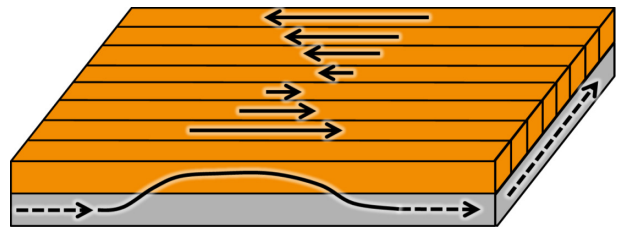


Figure 12. Current flow behaviour in the eddy current suppressing DLM.

The design results in a reduction in eddy current driven torques and bolt loads by a factor of 10. The total disruption torque calculated for the modified panels is now only 15 kNm, and the highest bolt load is 25kN.

4. Summary

The requirements placed on the ITER HNB Duct Liner have led to the use of novel design solutions to achieve its purpose.

The main body of the Duct Liner is composed of a stainless steel Neutron Shield, onto which CuCrZr alloy Duct Liner Modules are bolted. Both are deep drilled and water cooled, and most of the Duct Liner Modules are Remote Handling Class 2, presenting certain challenges.

Two of the key design features used are as follows. Firstly the RH bolts and water connection welds are protected by tungsten caps that radiate heat away without the need for coolant, by reaching temperatures above 2000°C . Secondly, explosion bonded CuCrZr-316L(N) panels with grooves cut in the copper alloy layer are used to reduce eddy currents, and hence magnetic disruption loads, by a factor of 10.

Acknowledgments

This work was funded by the RCUK Energy programme and F4E, under Grant F4E-2009-GRT-022.

References

- [1] F. Géli, Load specification for HNB duct liner, ITER_D_4AMFEK v3.1