

UKAEA-CCFE-PR(19)08

B Chapman, R O Dendy, S C Chapman, K G
McClements, G S Yun, S G Thatipamula, M H Kim

Interpretation of suprathermal emission at deuteron cyclotron harmonics from deuterium plasmas heated by neutral beam injection in the KSTAR tokamak

Enquiries about copyright and reproduction should in the first instance be addressed to the UKAEA Publications Officer, Culham Science Centre, Building K1/O/83 Abingdon, Oxfordshire, OX14 3DB, UK. The United Kingdom Atomic Energy Authority is the copyright holder.

The contents of this document and all other UKAEA Preprints, Reports and Conference Papers are available to view online free at scientific-publications.ukaea.uk/

Interpretation of suprathermal emission at deuteron cyclotron harmonics from deuterium plasmas heated by neutral beam injection in the KSTAR tokamak

B Chapman, R O Dendy, S C Chapman, K G McClements, G S Yun, S G Thatipamula, M H Kim

Interpretation of suprathermal emission at deuteron cyclotron harmonics from deuterium plasmas heated by neutral beam injection in the KSTAR tokamak

B Chapman¹, R O Dendy^{1,2}, S C Chapman¹, K G McClements², G S Yun³, S G Thatipamula³ and M H Kim³

¹ Centre for Fusion, Space and Astrophysics, University of Warwick, Coventry, CV4 7AL, UK

² CCFE, Culham Science Centre, Abingdon, OX14 3DB, UK

³ Pohang University of Science and Technology, Pohang, Gyeongbuk 37673, Republic of Korea

E-mail: B.Chapman@warwick.ac.uk

November 2018

Abstract. Intense bursts of suprathermal radiation, with spectral peaks at frequencies corresponding to the deuteron cyclotron frequency in the outer midplane edge region, are often detected from deuterium plasmas in the KSTAR tokamak that are heated by tangential neutral beam injection (NBI) of deuterons at 100 keV. Identifying the physical process by which this deuterium ion cyclotron emission (ICE) is generated, typically during the crash of edge localised modes (ELMs), assists the understanding of collective energetic ion behaviour in tokamak plasmas. In the context of KSTAR deuterium plasmas, it is also important to distinguish deuterium ICE from the ICE at cyclotron harmonics of fusion-born protons examined by B. Chapman et al., Nucl. Fusion 57, 124004 (2017) and 58, 096027 (2018). We use particle orbit studies in KSTAR-relevant magnetic field geometry, combined with a linear analytical treatment of the magnetoacoustic cyclotron instability (MCI), to identify the sub-population of freshly ionised NBI deuterons that is likely to excite deuterium ICE. These deuterons are then represented as an energetic minority, together with the majority thermal deuteron population and electrons, in first principles kinetic particle-in-cell (PIC) computational studies. By solving the Maxwell-Lorentz equations directly for hundreds of millions of interacting particles with resolved gyro-orbits, together with the self-consistent electric and magnetic fields, the PIC approach enables us to study the collective relaxation of the energetic deuterons through the linear phase and deep into the saturated regime. The Fourier transform of the excited fields displays strong spectral peaks at multiple successive deuteron cyclotron harmonics, mapping well to the observed KSTAR deuterium ICE spectra. This outcome, combined with the time-evolution of the energy densities of the different particle populations and electric and magnetic field components seen in the PIC computations, supports our identification of the driving sub-population of NBI deuterons, and the hypothesis that its relaxation through the MCI generates the observed deuterium ICE signal. We conclude that the physical origin of this signal in KSTAR is indeed distinct from that of KSTAR proton ICE, and is in the same category as the NBI-driven ICE seen notably in TFTR tokamak and LHD heliotron-stellarator plasmas. ICE has been proposed as a potential passive diagnostic of energetic particle populations in ITER plasmas; this is assisted by clarifying and extending the physics basis of ICE in contemporary magnetically confined plasmas.

PACS numbers: 52.35.Hr, 52.35.Qz, 52.55.Fa, 52.55.Tn

Keywords: ion cyclotron emission, magnetoacoustic cyclotron instability, ELM, tokamak, numerical simulation, particle in cell, KSTAR, Neutral beam injection

1. Introduction

In magnetically confined fusion (MCF) plasmas, the measured power spectrum of ion cyclotron emission (ICE) typically exhibits multiple narrow peaks whose frequencies are identified with sequential cyclotron harmonics of ions in the emitting region. The intensity of ICE is typically orders of magnitude greater than that of black-body radiation from thermal ions. ICE is therefore interpreted in terms of the collective relaxation of a non-Maxwellian energetic ion population which is spatially localised to the emitting region of the plasma. ICE from the outer midplane edge region was the first collective radiative instability driven by confined fusion-born ions that was observed from deuterium-tritium (D-T) plasmas in JET [1, 2, 3] and TFTR [4, 5]. The measured intensity of the ICE signal scaled linearly with the measured neutron flux and with the inferred alpha-particle concentration, and hence with fusion reactivity [6]. ICE from the outer edge of the vessel has been detected from the largest contemporary toroidal plasmas including DIII-D [7], ASDEX-Upgrade [8], JT-60U [9], KSTAR [10, 11], and LHD [12]. Recently, ICE due to both fusion-born and neutral beam injected (NBI) ions in the core of the tokamak has been detected on ASDEX-Upgrade [13, 14], DIII-D [15], and TUMAN-3M [16]. The use of ICE as a diagnostic for confined energetic ion populations in ITER is under active consideration [17], and also for future D-T plasmas in JET. ICE is an ubiquitous plasma phenomenon, and has also been detected in solar-terrestrial plasmas [18, 19, 20, 21, 22], including the Earth’s Van Allen belts [23], and is possibly present downstream of supernova remnant shocks [24].

The excitation mechanism for ICE is the magnetoacoustic cyclotron instability (MCI) [17, 25, 26, 27, 28, 29, 30, 31, 32, 33, 34, 35, 36, 37, 38, 39, 40]. This arises when a minority energetic ion population enters into cyclotron resonance with a fast Alfvén wave propagating nearly perpendicular to the local magnetic field. This resonance can either be wave-wave [26, 27, 28], between cyclotron harmonic waves supported by the minority ions and fast Alfvén waves supported by the bulk plasma, or wave-particle [30, 31], at Doppler-shifted cyclotron resonance between the minority ions and the Alfvén wave. A necessary condition for the MCI to occur is that the fusion-born ions have a velocity distribution function that is highly non-Maxwellian. This typically arises in the ICE emitting region from drift orbit effects, for ICE driven by fusion-born ions, and from local ionisation and prompt loss effects, for ICE driven by NBI ions.

In recent years, electromagnetic emission in the radio frequency (RF) range has been observed from ELMy H-mode plasmas in the KSTAR tokamak [10,

11, 41, 42]. The emission is highly dynamic, evolving throughout the duration of the ELM crash. There are two main distinct phases: spectral lines at multiple harmonics of the local ion cyclotron frequency at the outer midplane edge pedestal of the KSTAR plasma, at times $\sim 10\mu\text{s}$ to $100\mu\text{s}$ before the ELM crash; and broadband RF emission, sometimes chirping in frequency, during the pedestal collapse following the filament burst [41]. These two phases can be seen in Fig. 1, which has been adapted from Fig. 2 of [11]. Time intervals A and B broadly correspond to “phase 1”, and C and D to “phase 2”. For a more thorough account of the differences between regions A to D, and their relationship to ELM dynamics, we refer to Refs. [10] and [11]. The chirping observed during “phase 2” involves a fast redistribution of intensity across the fixed multiple cyclotron harmonics at which the ion cyclotron emission (ICE) is observed. Using particle-in-cell (PIC) [43] simulations [44], this chirping has been attributed to the rapidly changing spectral characteristics of the MCI which are caused by the rapidly decreasing local plasma density. This is due to the motion of ELM filaments during the pedestal collapse. Chirping ICE spectral peaks in KSTAR plasmas are observed at harmonics of either the deuteron cyclotron frequency f_{cD} , or the proton cyclotron frequency $f_{cp} = 2 \times f_{cD}$. The only protons in these KSTAR deuterium plasmas heated by deuterium neutral beam injection (NBI) are those born from deuteron-deuteron fusion reactions in the core plasma. These have initial energy 3MeV, and were previously thought to be unconfined. However the ICE observations at harmonics of f_{cp} prompted the test particle calculations of Ref. [44] which show that a subset of the fusion-born protons remain confined on deeply passing orbits whose drift excursions traverse the ICE emitting region. In addition, some KSTAR pulses exhibit much fainter, higher frequency ICE spectral features at the proton cyclotron frequency which are time delayed with respect to the main chirping feature. One such feature, also displaying downward proton chirping, was explained using PIC simulations combined with spectral analysis of the data, as being driven by nonlinear wave-wave interactions within the lower frequency chirping ICE feature [45].

In this paper we turn to the phenomenon of ICE spectra from KSTAR that are characterised by deuteron, as distinct from proton, cyclotron harmonic structure. This steady state deuterium ICE typically occurs during “phase 1”. In the two KSTAR deuterium plasmas that we consider, beams of 80keV to 100keV deuterons were injected tangentially with NBI heating power in the range 2.8MW to 3.8MW. Detailed calculations of NBI ion losses suggest that some of

these NBI deuterons can remain confined on trapped orbits [46]. We therefore investigate whether this small subset of NBI deuterons can give rise to ICE via the MCI in the outer midplane edge plasma.

In particular we study the fast collective relaxation of these NBI deuterons by means of a direct numerical kinetic treatment. We self-consistently solve the Maxwell-Lorentz system of equations for more than 100 million computational macro-particles, using the EPOCH PIC code [43] with one periodic spatial dimension and all three velocity dimensions (1D3V). We follow the full gyro-orbit kinetics of the electrons, background deuterons, and the minority energetic NBI deuteron population. The velocity-space distribution of the energetic ions is initialised as a ring-beam distribution with $f(v_{\parallel}, v_{\perp}) \propto \delta(v_{\parallel}) \delta(v_{\perp} - u)$; here v_{\parallel} and v_{\perp} are the magnitudes of the velocity components parallel and perpendicular to the magnetic field respectively, and u is the magnitude of the initial perpendicular component of NBI ion velocity. In these computations, we consider only perpendicular spatial propagation ($k_{\parallel} = 0$), so that the distribution of v_{\parallel} is immaterial and can be simplified to a delta function. A more extensive summary of the EPOCH code is given in Appendix A. Our simulations are set up in slab geometry corresponding to the local approximation; they do not incorporate any toroidal effects or eigenmode structure [33, 34, 35, 47, 48, 49, 50, 51, 52, 53, 54]. It seems likely that the latter effects may have only marginal consequences for the ICE phenomenology addressed here, because of the success of the local approximation in explaining recent results from KSTAR [44, 45] and LHD [39, 40], as well as the ICE observations from JET and TFTR [1, 2, 3, 4, 5, 36, 37].

In section 2 we carry out the preliminary studies that enable us to identify the subset of the NBI deuterons that is likely to drive deuterium cyclotron harmonic ICE from KSTAR. These studies combine particle orbit calculations with analysis of linear MCI growth rates for deuterons with different energies and pitch angles. In particular, we identify the types of NBI deuteron orbits that can give rise to a population inversion in velocity space, spatially localised to the outer midplane edge, that is substantial enough to drive the MCI strongly. In section 3 we present the main results of this paper: direct numerical simulations of the fast collective relaxation of the NBI deuteron population, evolving self-consistently with the electric and magnetic fields which they are found to excite under the Maxwell-Lorentz system of equations. The outputs of these simulations are then compared with observed ICE power spectra from KSTAR plasmas. Section 4 offers a summary, along with comments on the potential benefits of possible

future ICE measurements on ITER [25].

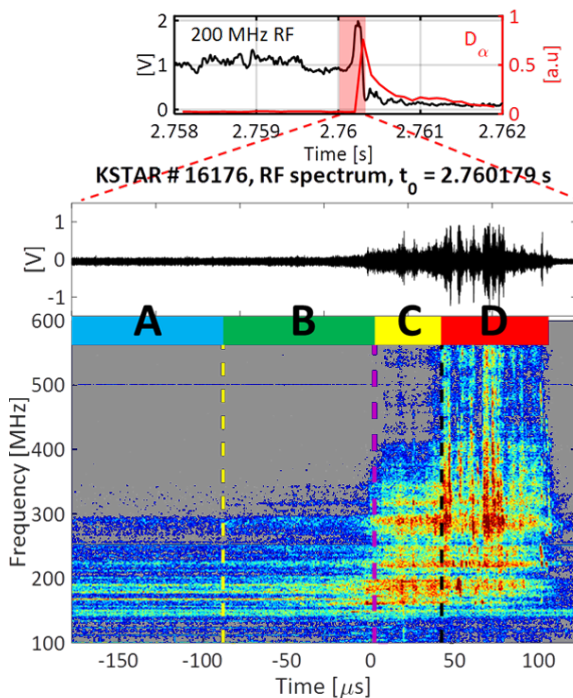


Figure 1: Upper panel: 200MHz RF (black) and D_{α} (red) signals around the ELM crash during KSTAR plasma 16176. Lower panel: Temporal evolution of ICE amplitude during an ELM crash in KSTAR plasma 16176. Time $t = 0$ denotes the time at which the first derivative of the RF signal is almost discontinuous, which coincides with the peak in the RF signal, the bursting phase [11]. During windows A and B, the ICE signal shows spectral peaks at successive harmonics of the deuterium cyclotron frequency. The ICE signal during windows C and D shows more complex burst phenomena, which are discussed in Refs. [10, 11, 44, 45].

2. Identifying NBI deuterons in KSTAR that could relax via the MCI

In order to carry out direct numerical simulations using the PIC self-consistent kinetic approach, it is first necessary to identify a population of NBI deuterons that could give rise to ICE at the outer midplane edge. To inform this search, we first calculate analytical linear growth rates of the MCI given by Eq. 29 of Ref. [30] across a range of NBI injection energies and pitch angles $\phi = \arcsin(v_{\perp}/|v|)$. When calculating the analytical linear growth rates from Eq. 8 of Ref. [31], it is necessary to use an angle of wave propagation that is not strictly perpendicular to the magnetic field, and we select $\theta = 89^{\circ}$. This very closely resembles our simulation set-up for the $v_{\parallel} \ll v_{\perp}$ cases considered in this paper, as the Doppler shift due to the finite parallel

wave-number k_{\parallel} is minimal. The results are shown as a contour plot in Fig. 2. The colour scale represents the \log_{10} of the growth rate of the fastest growing mode in both wavevector and frequency space. We see that NBI deuterons with higher energy and pitch angle have the stronger growth rates. This is expected, since previous studies show [36, 37, 38, 39, 40] that the MCI is more readily excited for $v_{\perp}/v_A \sim 1$, where v_A is the local Alfvén speed; and, of course, v_{\perp} increases with both energy and pitch angle.

We now calculate orbits for deuterons with an energy of 100keV and large initial pitch angles. The choice of 100keV reflects the initial energy of KSTAR NBI deuterons. If this energy is primarily perpendicular, it corresponds to $v_{\perp}/v_A \sim 0.68$ in the KSTAR outer midplane edge plasma. This choice is also helpful from a computational physics perspective: previous PIC and PIC-hybrid simulations [36, 37, 38, 39, 40] have shown that a value of v_{\perp}/v_A close to unity allows excitation of the MCI in a feasible amount of computational time, while maintaining high signal-to-noise ratios [36, 37, 39, 40]. The deuteron orbit calculations are carried out using the CUEBIT test particle code [55]. Defining poloidal flux ψ such that the poloidal magnetic field is equal to $\nabla\psi \times \nabla\varphi$, where φ is toroidal angle in (R, φ, Z) cylindrical coordinates, we set

$$\psi = \psi_0 \left[\frac{\gamma}{8} \{ (R^2 - R_0^2)^2 - R_b^4 \} + \frac{1 - \gamma}{2} R^2 Z^2 \right]. \quad (1)$$

Here R_0 , R_b , γ and ψ_0 are constants which determine the plasma major and minor radii, the plasma elongation, and the plasma current. Equation 1 belongs to a class of solutions of the Grad-Shafranov equation obtained by Solov'ev [56], and is written in a convenient form proposed by Freidberg [57]. It is applicable to a plasma in which the pressure depends linearly on ψ , and RB_{φ} is uniform, B_{φ} being the toroidal magnetic field. We use the following parameters to approximate typical KSTAR equilibria: $R_0 = 1.8$ m, $R_b = 1.31$ m, $\gamma = 0.7$, and $\psi_0 = 0.36$ Tm⁻². Motivated by experiment [11], we first set $B_0 = 1.8$ T. We initialise particles near the core with a range of pitch angles, and find that some of these lead to orbits that traverse the edge region while remaining confined. The results of some of these calculations are shown in Fig. 3. Each panel represents a different initial pitch angle, and is accompanied by an enlarged plot of the edge region. By matching deuteron cyclotron harmonic ICE spectral peak frequencies to the known spatial dependence of magnetic field strength in KSTAR, we know that the emitting region is at $R = 2.21 \pm 0.023$ m [11]. We therefore discard orbits that do not reach this far out in radius, in addition to orbits that cross the plasma boundary. In principle not all of the fast ions that cross the plasma

boundary will impact on the first wall, and some will remain ionised in the plasma. While such particles could contribute in part to the ICE drive, they are likely to be much less abundant than particles within the plasma boundary, and as such are excluded in this initial study. We find that an initial pitch angle of 80 degrees results in an orbit that crosses the plasma boundary, while an initial pitch angle of 84 degrees results in an orbit which does not traverse the location of ICE emission. Initial pitch angles between these two values result in orbits that are both within the plasma boundary, and traverse the ICE emitting region for the given values of NBI injection energy and magnetic field. We also consider $B_0 = 2.27$ T, for which KSTAR deuterium ICE was also observed [10], and arrive at similar conclusions: only NBI deuterons with energy close to the injection energy and within a narrow range of high pitch angles, are capable of driving the MCI. Now that we have isolated the subset of NBI deuterons that is in principle capable of driving the observed ICE at deuterium harmonics, in Section 3 we simulate their relaxation using a PIC code and analyse the outputs.

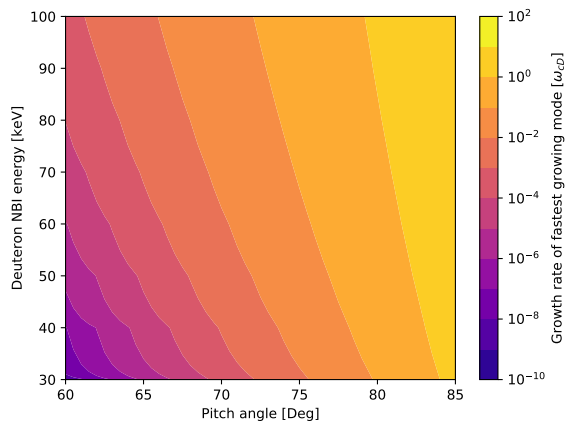


Figure 2: Contour plot displaying the analytical linear MCI growth rate of the fastest growing mode as a function of pitch angle and particle energy, using a \log_{10} colour scale. Motivated by experimental observations, these calculations are restricted to frequencies below the 30th deuteron cyclotron harmonic. The linear MCI growth rate is exponentially strongest for pitch angles in the range $78^\circ < \phi < 85^\circ$. For a given pitch angle, the linear MCI is strongest at higher NBI deuteron energy; the strength of this dependence increases with pitch angle. The range of pitch angles displayed reflects the range for which the CUEBIT test particle code predicts orbits which are within the plasma boundary and traverse the ICE emitting region, see also Fig. 3.

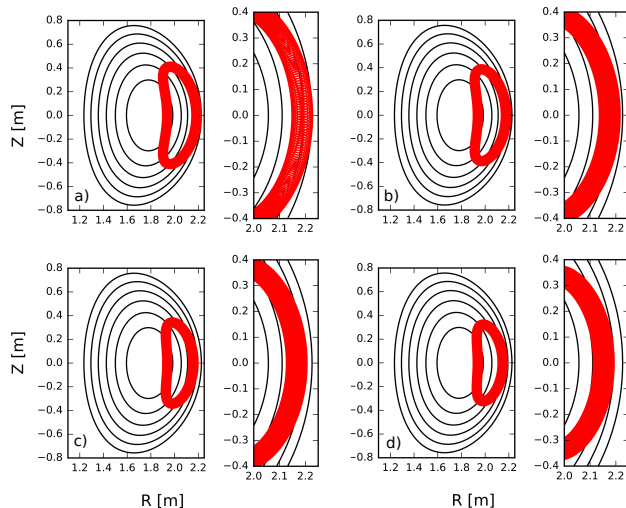


Figure 3: Poloidal projection of 100keV NBI deuteron orbits calculated using the CUEBIT test particle code using a Solov’ev approximation to a typical KSTAR equilibrium. Particle orbits are initialised near the core for four different pitch angles within the range $80^\circ \leq \phi \leq 84^\circ$. Plots of full orbits are labelled a)-d) with corresponding insets to the right of each panel. Panels a), b), c), and d) show orbits with initial pitch angles of 80° , 81° , 83° , and 84° respectively.

3. Comparison between kinetic simulations and experiment

We have carried out three PIC simulations with parameters corresponding to two KSTAR plasmas that exhibit deuterium ICE leading up to the ELM crash. These simulations use an initially uniform electron number density $n_e = 2.5 \times 10^{19} \text{m}^{-3}$, corresponding to the density at the top of the edge pedestal before the ELM crash, as inferred from Thompson scattering measurements [10]. This value of n_e was the upper bound of the multiple simulations at different fixed density that were used previously [44, 45] to show that the frequency chirping of KSTAR proton ICE is due to the density collapse. Our simulations use 2,000 particles per cell, with over 50,000 cells so as to adequately resolve the Debye length λ_D . This means the simulations evolve the dynamics of over 10^8 computational particles with physically correct electron-to-ion mass ratios. Each simulation lasts 10 deuteron gyro-periods τ_{cD} , by which time the instability is well into its non-linear saturated regime, which is crucial for comparison with experiment [36, 37, 45]. The temperatures of the initially Maxwellian background thermal deuterons and electrons are set to 1keV. The beam deuterons are initialised with a pitch angle of 72.4° ; this is a value in the edge region which corresponds to a core value within the range $80^\circ < \phi < 84^\circ$ identified by the

CUEBIT orbit calculations in the preceding section. We denote the bulk and beam deuteron number densities by n_D and n_{NBI} respectively, and the fast ion concentration by $\xi = n_{NBI}/n_D$.

Figure 4 shows the time evolution of the different particle and field contributions to the energy density in a PIC simulation with $\xi = 10^{-3}$ and $B_{0z} = 1.44\text{T}$; this value corresponds to the magnetic field in the ICE emitting region of a KSTAR plasma which has central $B_0 = 1.8\text{T}$. The energy transfer between particles and fields qualitatively resembles that of previous work [36, 37], with the minority NBI deuterons transferring their energy to the bulk plasma and to the fields on timescales of the order of several ion gyro-periods. It is interesting to note that the energy density of the electrostatic component of the fields excited by the simulation is slightly larger than that of the electromagnetic component. This approximate equipartition of energy is common when the speed of the minority ions is significantly less than v_A [39, 40]. Confident that the energy transfer resembles that which is characteristic of the MCI, we now run two more simulations with $\xi = 10^{-2}$. This concentration is unrealistically large compared to that expected in KSTAR, and leads to an unrealistically short saturation time, but is necessary computationally in order to obtain reasonable signal-to-noise ratios. This choice is not expected to affect our conclusions, because the simulated ICE power due to the MCI has been found to scale linearly with fast particle concentration [38]. Increasing ξ in the simulations thus acts to shift the simulated signal above the noise, but with no significant consequences for the underlying physics. Even with this choice of ξ , the noise level for the higher, experimentally relevant, cyclotron harmonic spectral peaks that are excited in the PIC simulations still poses a challenge; this we address by using an unusually high number of computational particles. To provide a baseline which quantifies the effect of the noise, we have run two additional simulations which correspond to a thermal background plasma without the minority energetic NBI deuterons. These “background” simulations have parameter sets which are otherwise identical to their MCI counterparts, and give rise to the green traces in Fig. 6 below. The residual spectral structure in the green traces reflects the concentration of noise energy at normal modes in line with the fluctuation-dissipation theorem [58].

Figure 5 shows the distribution of energy in the fluctuating z-component of the magnetic field, ΔB_z , across frequency-wavenumber space, obtained from a simulation identical to that of Fig. 4, except for the larger value of $\xi = 10^{-2}$. This plot is a spatio-temporal Fourier transform of ΔB_z over the intervals

$0 \leq x \leq 50,000\lambda_D$ and $0 \leq t \leq 5\tau_{cD}$. The vertical axis of Fig. 5 is normalised to the deuteron cyclotron frequency f_{cD} , while the horizontal axis is normalised to f_{cD}/V_A , where V_A is the Alfvén speed. The solid blue diagonal line denotes the initial velocity of the minority NBI deuterons, and the ratio of the perpendicular component of the NBI deuteron velocity to the Alfvén speed is ~ 0.66 . This sub-Alfvénic value highlights a computational challenge associated with resolving the high harmonics that are excited by the MCI.

The phase velocity of the fast Alfvén wave is significantly greater than the perpendicular velocity of the minority NBI deuterons v_{NBI} , which is plotted as a blue diagonal line in Fig. 5. For a given perpendicular wave-number k_\perp , this causes a divergence between the value of $\omega = l(2\pi f_{cD}) \approx k_\perp V_A$ and the closest value of $k_\perp v_{NBI}$. The size of this divergence increases with harmonic number l , and it follows that MCI-excited waves with high wavenumbers, and hence high frequency, are further from resonance with the fast Alfvén wave than their lower frequency counterparts; in consequence, they have much lower growth rates. The spectral power is greatest at locations where the deuteron cyclotron harmonic waves intersect the fast Alfvén wave, and marked resonances are visible at lower harmonics in Fig. 5. The resonances at higher wavenumbers and frequency are less striking, but can be distinguished from the background noise.

The spatiotemporal Fourier transform shown in Fig. 5 has been integrated across the domain $k > 0$ to obtain the power spectrum as a function of frequency. This spectrum is shown as the blue trace in Fig. 6 (c). Its counterpart from a simulation with $B_z = 1.84\text{T}$ which corresponds to a KSTAR plasma with central magnetic field $B_0 = 2.27\text{T}$, is shown in Fig. 6 (d). These power spectra constitute the PIC simulation counterparts of the experimentally measured ICE spectra. Panel (a) of Fig 6 displays the power spectrum of the experimental counterpart to the PIC simulation which gives rise to panel (c): KSTAR plasma 16176, in which the spacing between deuteron cyclotron harmonics $f_{cD} \sim 11.1\text{MHz}$. In all panels, the vertical axis is plotted on a \log_{10} scale while the horizontal axis is normalised to the deuteron cyclotron frequency. We see that the deuteron cyclotron harmonic ICE spectral peaks observed in the KSTAR plasmas are all excited by the collective relaxation of the energetic deuteron population in the PIC simulations. Across all deuteron harmonics the intensity of the MCI-excited waves (blue traces) is one or two orders of magnitude higher than that of the thermal plasma noise (green traces). It can be seen that the spectral peaks in the simulations are less well resolved in frequency than in the experimentally measured signal. This is because

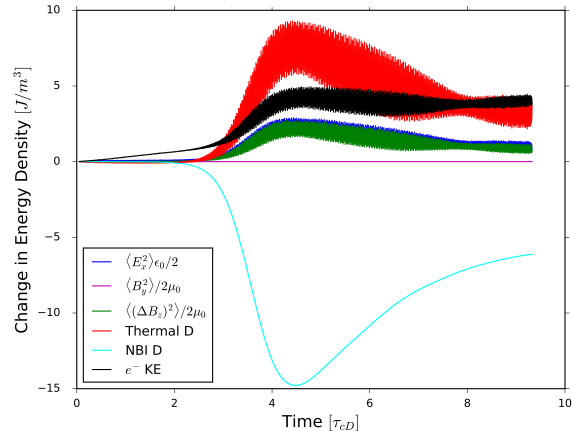


Figure 4: Time evolution of the change in energy density of particles and electric and magnetic fields as a function of time, from a PIC simulation with $\xi = 10^{-3}$. The traces, ordered from top to bottom at their peak (and in colour online) are: Top (red) the change in kinetic energy density of the thermal bulk plasma deuterons; second (black) change in energy density of the electrons; third (blue) the energy density of the electrostatic field E_x ; fourth (green) the energy density of the magnetic field perturbation ΔB_z ; fifth (cyan) the change in kinetic energy density of the minority energetic NBI deuterons. Time is normalised to the deuteron gyro period. The primary energy flow from the NBI deuterons is to the thermal deuterons, whose kinetic oscillation helps support the field oscillations excited by the MCI. These field oscillations include, with comparable magnitude, an electromagnetic component $(\Delta B_z)^2$ and an electrostatic component E_x^2 . The electrostatic component involves electron kinetics which are fully captured in our PIC model. The MCI saturates within five deuteron gyroperiods.

the instability in the simulation reaches saturation so rapidly, owing to the unrealistically large value of ξ which is necessary to achieve a sufficient signal-to-noise ratio. It is encouraging to see the broadening and diminishing amplitude, of spectral peaks at $l \gtrsim 21$ in both experiment and simulation.

Panels (b) and (d) of Fig. 6 show similar traces corresponding to KSTAR plasma 11474 with central magnetic field $B_0 = 2.27\text{T}$ and corresponding $f_{cD} \sim 14.0\text{MHz}$ at the outer midplane edge. The agreement between PIC simulation outputs and the measured experimental ICE spectrum is good for harmonics $l \gtrsim 11$. However several spectral peaks with $l < 11$ are present in the simulation but are not observed in the experiment. We consider that these peaks may well have been excited, but were not detectable because the antenna used to measure the RF data whose power spectrum is plotted in panel (a) of Fig. 6 was a spiral antenna, optimised for circularly polarised waves. A different, Bowtie antenna, optimised for linearly

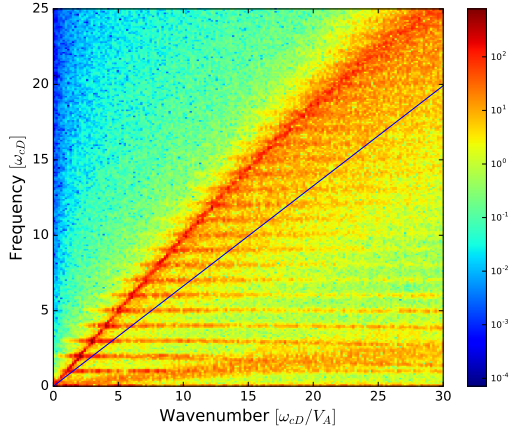


Figure 5: Distribution of energy in the fluctuating z -component of the magnetic field ΔB_z across frequency-wavenumber space from a PIC simulation with $\xi = 10^{-2}$, $T_e = T_D = 1\text{keV}$, $B_{0z} = 1.44\text{T}$, $n_e = 2.5 \times 10^{19}\text{m}^{-3}$, and a 100keV minority NBI deuterium population. This plot is a spatio-temporal Fourier transform of the B_z field over the intervals spanning $0 \leq x \leq 50,000\lambda_D$ and $0 \leq t \leq 5\tau_{cD}$. Shading indicates the \log_{10} of the spectral density of the oscillatory part ΔB_z of the B_z field component in frequency-wavenumber space. The sweep of the fast Alfvén wave from bottom left to top right is intersected by cyclotron harmonic waves at successive deuterium harmonics. The phase velocity of the fast Alfvén wave $\simeq v_A$, and this exceeds the speed v_{NBI} of the NBI deuterons which is plotted as a blue diagonal line. Wave excitation is strongest in the wedge between v_A and v_{NBI} , and in particular where cyclotron harmonic waves intersect the fast Alfvén wave. Simulated ICE frequency spectra, such as the lower panels of Fig. 6, are obtained by integrating plots such as Fig. 5 over wavenumber.

polarised waves, was used for KSTAR plasma 11474, corresponding to panel (b) of Fig. 6. The S_{11} return loss [59] of these two antennas is plotted in Fig. 7. For frequencies less than 150MHz ($l < 11$), the return loss of the Bowtie antenna is close to 0dB . This implies a high degree of reflectivity for an incoming signal, which would therefore be undetectable. Combined with the linear or circular optimisations of the two antenna polarisations, this offers a likely explanation of the mismatch between experimental and simulation spectral peaks at low harmonic numbers seen in panels (b) and (d) of Fig. 6.

4. Conclusions

In this paper we have combined the linear analytical theory of the MCI, energetic particle orbit studies, and first principles PIC simulations which self-consistently solve the Maxwell-Lorentz equations for fully kinetic ion and electron populations. This has enabled us to

provide an explanation for the origin of ICE at multiple deuterium cyclotron harmonics, which is observed in KSTAR deuterium plasmas heated by deuterium NBI. We first identified a small subset of the NBI deuterium population that could be responsible for the emission. This was done by performing test particle calculations for deuterons with a range of NBI-relevant energies and pitch angles. We identified those that are confined, pass through the outer midplane edge region where the ICE originates, and have the largest analytical MCI growth rates. We then carried out two high resolution PIC simulations with parameters corresponding to the ICE emitting region at the outer mid-plane edge of two KSTAR plasmas. The initial velocity distributions of the kinetic thermal deuterons and electrons in these PIC simulations is Maxwellian. In addition, there is an initial minority energetic deuterium population, whose velocity distribution reflects NBI parameters and our orbit studies. The collective relaxation of the NBI deuterium population in these two PIC simulations generates electric and magnetic field oscillations whose power spectra substantially resemble the measured ICE spectra. Some low harmonic peaks in one simulation frequency spectrum were not detected in its experimental counterpart. A probable explanation for this is that the S_{11} return loss of the Bowtie antenna used to measure this RF signal was close to 0dB , implying very high reflectivity in this low frequency range.

The present study complements the analysis in Refs. [44, 45] of ICE from KSTAR deuterium plasmas, in which the observed spectral peaks correspond to harmonics of the proton cyclotron frequency. This was explained in terms of regions of the collective relaxation of a subset of confined fusion-born protons through the MCI, and occurs around $100\mu\text{s}$ after the stage in the ELM dynamics considered here. We have now explained the main features of two distinct types of ICE from KSTAR plasmas: here, that due to NBI deuterons; and in Refs. [44, 45], that due to fusion-born protons. We note that upward and downward chirping ICE with spacing f_{cD} has been observed in Refs. [10, 11], and this is a phenomenon under investigation.

The ICE physics addressed in this paper and in Refs. [10, 11, 44, 45], would have gone unnoticed had it not been for KSTAR’s sophisticated RF system and high speed digitizer [42]. Their uniquely high time resolution has yielded new insights into the dynamics of ELMs, energetic ions, and wave phenomena in tokamak plasmas. The present results further strengthen the case for the use of ICE as a diagnostic [17, 25, 54] on ITER [60, 61], from both an operational and a fundamental physics perspective.

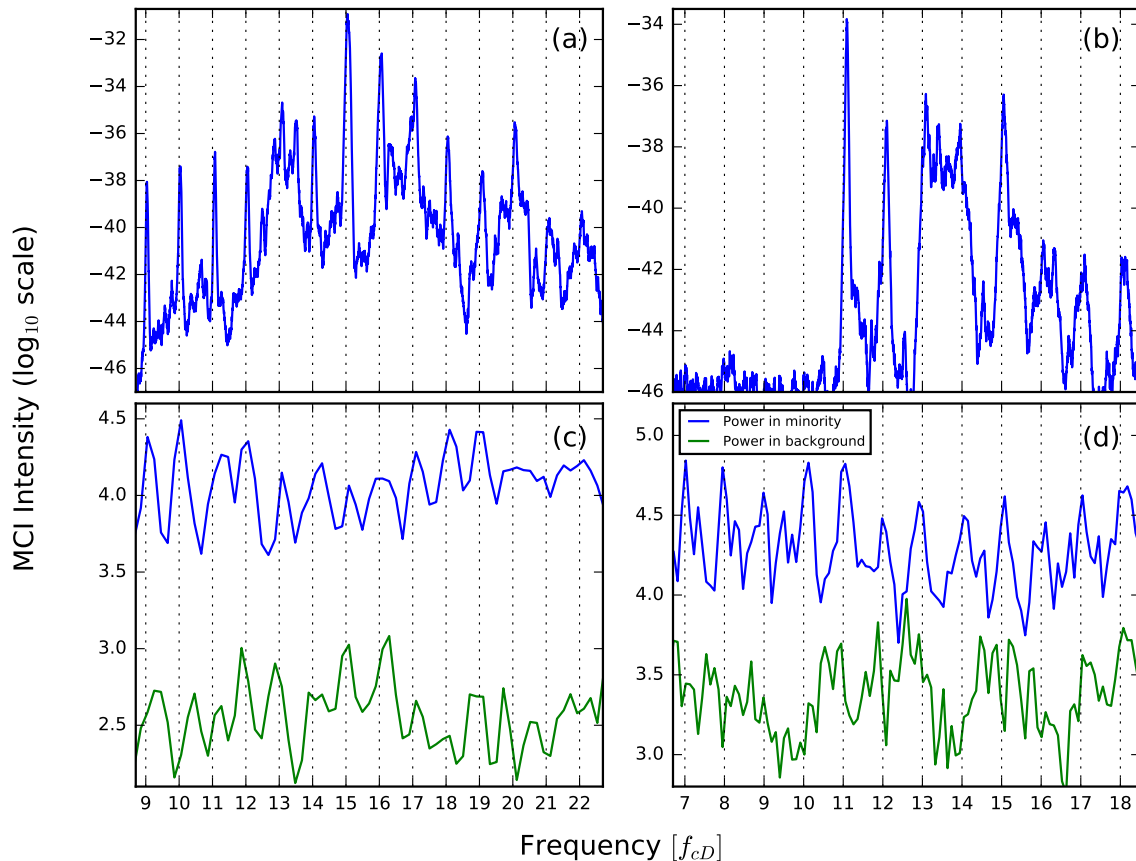


Figure 6: Panels (a) and (b): measured spectral intensity of the ICE signal from KSTAR deuterium plasmas with 100keV deuteron NBI heating: (a) [11] plasma 16176 with $B_0 = 1.84\text{T}$, (b) [10] plasma 11474 with $B_0 = 2.27\text{T}$. In both panels the FFT was performed using data from $t = -150\mu\text{s}$ to $t = -100\mu\text{s}$ relative to t_0 (see, for example, Fig. 1). Panels (c) and (d): Blue traces are outputs of PIC simulations of the spectral intensity of the fluctuating B_z field energy density, resulting from relaxation of a minority 100keV deuteron ring-beam population in thermal deuterium plasma. The simulation parameters of (c) and (d) map to (a) and (b) respectively, corresponding to the local ICE-emitting plasma in the two KSTAR experiments: $n_e = 2.5 \times 10^{19}\text{m}^{-3}$, $T_e = T_D = 1\text{keV}$. Green traces provide a noise baseline for the blue traces. They are obtained from the thermal plasma without a ring-beam, so that any spectral structure arises from the fluctuation-dissipation theorem and identifies normal modes.

Acknowledgments

This project used the EPOCH code, part funded by UK EPSRC grants EP/G054950/1, EP/G056803/1, EP/G055165/1 and EP/M022463/1. This work was carried out within the framework of the EUROfusion Consortium and has received funding from the Euratom research and training programme 2014-2018 and 2019-2020 under grant agreement No 633053. The work received support from the RCUK Energy Programme grant no. EP/P012450/1. The views and opinions expressed herein do not necessarily reflect those of the European Commission. S.C.C acknowledges a Fulbright-Lloyd's of London

Scholarship and AFOSR grant FA9550-17-1-0054.

Appendix A.

Particle-in-cell (PIC) codes [58] self-consistently evolve the relativistic full gyro-orbit dynamics of very large numbers of charged particles, together with the spatially and temporally evolving self-consistent electric and magnetic fields, which are governed by the full set of Maxwell's equations. Coupling between particles and fields occurs through the relativistic Lorentz force law, Gauss' law, and Maxwell's generalisation of Ampère's law. The full system of

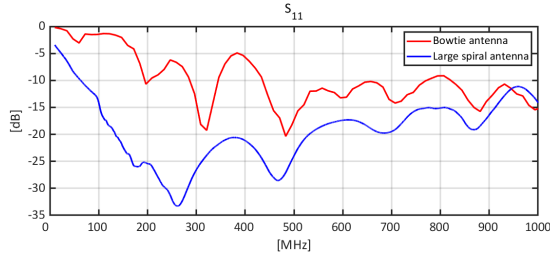


Figure 7: The return loss (S_{11}) as a function of frequency of the Spiral (blue) and Bowtie (red) antennas used for the detection of signals in panels (a) and (b) respectively. The y-axis denotes the return loss and is on a log scale. For frequencies less than 150MHz, the return loss of the Bowtie antenna is close to 0dB, offering a likely explanation of the mismatch between experimental and simulation spectral peaks at low harmonic number ($l \leq 11$) seen in panels (b) and (d) of Fig. 6.

equations solved by the PIC code is

$$\nabla \cdot \mathbf{E} = \frac{\rho}{\epsilon_0}, \quad (\text{A.1})$$

$$\nabla \cdot \mathbf{B} = 0, \quad (\text{A.2})$$

$$\nabla \times \mathbf{E} = -\frac{\partial \mathbf{B}}{\partial t}, \quad (\text{A.3})$$

$$\nabla \times \mathbf{B} = \mu_0 \left(\mathbf{J} + \epsilon_0 \frac{\partial \mathbf{E}}{\partial t} \right), \quad (\text{A.4})$$

$$\frac{d\mathbf{p}_i}{dt} = q_i (\mathbf{E} + \mathbf{v}_i \times \mathbf{B}). \quad (\text{A.5})$$

Here \mathbf{E} , \mathbf{B} , and \mathbf{J} are the electric field, magnetic field, and current density; ρ is the charge density; and \mathbf{v}_i , \mathbf{p}_i , and q_i denote the velocity and momentum vectors and charge of the i th particle in the simulation. Typically the index i spans tens or hundreds of millions of ions and electrons. In the work presented here, each species is represented by $\sim 10^8$ computational macroparticles. The electric and magnetic fields are evolved on a grid using a finite difference scheme, and the ‘‘Boris’’ [58] scheme is used to evolve the relativistic particle trajectories. In the work presented in this paper we use the EPOCH [43] PIC code. This is second order accurate, relativistically correct, and fully MPI parallelised. EPOCH has been successfully applied to a range of magnetic confinement fusion (MCF) relevant plasma physics problems [36, 44, 45, 62, 63, 64, 65, 66, 67, 68].

References

- [1] Cottrell G A and Dendy R O 1988 *Phys. Rev. Lett.* **60**(1) 33–36 URL <https://link.aps.org/doi/10.1103/PhysRevLett.60.33>
- [2] Cottrell G, Bhatnagar V, Costa O D, Dendy R, Jacquinot J, McClements K, McCune D, Nave M, Smeulders P and Start D 1993 *Nuclear Fusion* **33** 1365 URL <http://stacks.iop.org/0029-5515/33/i=9/a=I10>
- [3] Cottrell G A 2000 *Phys. Rev. Lett.* **84**(11) 2397–2400 URL <https://0-link-aps-org.pugwash.lib.warwick.ac.uk/doi/10.1103/PhysRevLett.84.2397>
- [4] Schild P, Cottrell G and Dendy R 1989 *Nuclear Fusion* **29** 834 URL <http://stacks.iop.org/0029-5515/29/i=5/a=013>
- [5] Cauffman S, Majeski R, McClements K and Dendy R 1995 *Nuclear Fusion* **35** 1597 URL <http://stacks.iop.org/0029-5515/35/i=12/a=I22>
- [6] Dendy R, McClements K, Lashmore-Davies C, Cottrell G, Majeski R and Cauffman S 1995 *Nuclear Fusion* **35** 1733 URL <http://stacks.iop.org/0029-5515/35/i=12/a=I38>
- [7] Heidbrink W W, Austin M E, Fisher R K, Garca-Muoz M, Matsunaga G, McKee G R, Moyer R A, Muscatello C M, Okabayashi M, Pace D C, Shinohara K, Solomon W M, Strait E J, Zeeland M A V and Zhu Y B 2011 *Plasma Physics and Controlled Fusion* **53** 085028 URL <http://stacks.iop.org/0741-3335/53/i=8/a=085028>
- [8] D’Inca R 2014 *Ion Cyclotron Emission on ASDEX Upgrade* Ph.D. thesis Ludwig-Maximilians-Universitat
- [9] Ichimura M, Higaki H, Kakimoto S, Yamaguchi Y, Nemoto K, Katano M, Ishikawa M, Moriyama S and Suzuki T 2008 *Nuclear Fusion* **48** 035012 URL <http://stacks.iop.org/0029-5515/48/i=3/a=035012>
- [10] Thatipamula S G, Yun G S, Leem J, Park H K, Kim K W, Akiyama T and Lee S G 2016 *Plasma Physics and Controlled Fusion* **58** 065003 URL <http://stacks.iop.org/0741-3335/58/i=6/a=065003>
- [11] Kim M, Thatipamula S, Lee J, Choi M, Park H, Akiyama T and Yun G 2018 *Nuclear Fusion* **58** 096034 URL <http://stacks.iop.org/0029-5515/58/i=9/a=096034>
- [12] Saito K, Kumazawa R, Seki T, Kasahara H, Nomura G, Shimpo F, Igami H, Isobe M, Ogawa K, Toi K, Osakabe M, Nishiura M, Watanabe T, Yamamoto S, Ichimura M, Mutoh T and Group L E 2013 *Plasma Science and Technology* **15** 209 URL <http://stacks.iop.org/1009-0630/15/i=3/a=03>
- [13] Ochoukov R, Bobkov V, Chapman B, Dendy R, Dunne M, Faugel H, Garca-Muoz M, Geiger B, Hennequin P, McClements K G, Moseev D, Nielsen S, Rasmussen J, Schneider P, Weiland M and Noterdaeme J M 2018 *Review of Scientific Instruments* **89** 10J101 URL <https://doi.org/10.1063/1.5035180>
- [14] Ochoukov R, Bilato R, Bobkov V, Chapman B, Chapman S, Dendy R, Dunne M, Faugel H, Garca-Muoz M, Geiger B, Kallenbach A, Kappatou A, McClements K, Moseev D, Nielsen S, Rasmussen J, Schneider P, Weiland M, Noterdaeme J M, Team A U and Team E M 2019 *Nuclear Fusion* **59** 014001 URL <http://stacks.iop.org/0029-5515/59/i=1/a=014001>
- [15] Thome K E, Pace D C, Pinsker R I, Meneghini O, del Castillo C A and Zhu Y 2018 *Review of Scientific Instruments* **89** 10I102 URL <https://doi.org/10.1063/1.5035561>
- [16] Askinazi L, Belokurov A, Gin D, Kornev V, Lebedev S, Shevelev A, Tukachinsky A and Zhubr N 2018 *Nuclear Fusion* **58** 082003 URL <http://stacks.iop.org/0029-5515/58/i=8/a=082003>
- [17] McClements K, D’Inca R, Dendy R, Carbajal L, Chapman S, Cook J, Harvey R, Heidbrink W and Pinches S 2015 *Nuclear Fusion* **55** 043013 URL <http://stacks.iop.org/0029-5515/55/i=4/a=043013>
- [18] Dendy R, McClements K, Dieckmann M and Woolsey N 2002 *Nuclear Fusion* **42** 986 URL <http://stacks.iop.org/0029-5515/42/i=8/a=307>
- [19] Dendy R O and McClements K G 1993 *Journal of Geophysical Research: Space Physics* **98** 15531–15539 URL <https://agupubs.onlinelibrary.wiley.com/doi/abs/10.1029/93JA01386>

- [20] McClements K G and Dendy R O *Journal of Geophysical Research: Space Physics* **98** 11689–11700 (Preprint <https://agupubs.onlinelibrary.wiley.com/doi/pdf/10.1029/93JA00158>) URL <https://agupubs.onlinelibrary.wiley.com/doi/abs/10.1029/93JA00158>
- [21] McClements K G and Dendy R O 1993 *Journal of Geophysical Research: Space Physics* **98** 11689–11700 URL <https://agupubs.onlinelibrary.wiley.com/doi/abs/10.1029/93JA00158>
- [22] McClements K G, Dendy R O and LashmoreDavies C N 1994 *Journal of Geophysical Research: Space Physics* **99** 23685–23693 URL <https://agupubs.onlinelibrary.wiley.com/doi/abs/10.1029/94JA01979>
- [23] Posch J L, Engebretson M J, Olson C N, Thaller S A, Breneman A W, Wygant J R, Boardsen S A, Kletzing C A, Smith C W and Reeves G D 2015 *Journal of Geophysical Research: Space Physics* **120** 6230–6257 URL <https://agupubs.onlinelibrary.wiley.com/doi/abs/10.1002/2015JA021179>
- [24] Rekaa V L, Chapman S C and Dendy R O 2014 *The Astrophysical Journal* **791** 26 URL <http://stacks.iop.org/0004-637X/791/i=1/a=26>
- [25] Dendy R O and McClements K G 2015 *Plasma Physics and Controlled Fusion* **57** 044002 URL <http://stacks.iop.org/0741-3335/57/i=4/a=044002>
- [26] Belikov V S and Kolesnichenko Y I 1976 *Sov. Phys. Tech. Phys.* **20** 1146
- [27] Dendy R O, LashmoreDavies C N and Kam K F 1992 *Physics of Fluids B: Plasma Physics* **4** 3996–4006 (Preprint <https://doi.org/10.1063/1.860304>) URL <https://doi.org/10.1063/1.860304>
- [28] Dendy R O, LashmoreDavies C N and Kam K F 1993 *Physics of Fluids B: Plasma Physics* **5** 1937–1944 (Preprint <https://doi.org/10.1063/1.860781>) URL <https://doi.org/10.1063/1.860781>
- [29] Dendy R O, McClements K G, LashmoreDavies C N, Majeski R and Cauffman S 1994 *Physics of Plasmas* **1** 3407–3413 URL <https://doi.org/10.1063/1.870489>
- [30] Dendy R O, LashmoreDavies C N, McClements K G and Cottrell G A 1994 *Physics of Plasmas* **1** 1918–1928 (Preprint <https://doi.org/10.1063/1.870647>) URL <https://doi.org/10.1063/1.870647>
- [31] McClements K G, Dendy R O, LashmoreDavies C N, Cottrell G A, Cauffman S and Majeski R 1996 *Physics of Plasmas* **3** 543–553 (Preprint <https://doi.org/10.1063/1.871881>) URL <https://doi.org/10.1063/1.871881>
- [32] McClements K G, Hunt C, Dendy R O and Cottrell G A 1999 *Phys. Rev. Lett.* **82**(10) 2099–2102 URL <https://link.aps.org/doi/10.1103/PhysRevLett.82.2099>
- [33] Fülöp T, Kolesnichenko Y, Lisak M and Anderson D 1997 *Nuclear Fusion* **37** 1281 URL <http://stacks.iop.org/0029-5515/37/i=9/a=I08>
- [34] Fülöp T and Lisak M 1998 *Nuclear Fusion* **38** 761 URL <http://stacks.iop.org/0029-5515/38/i=5/a=309>
- [35] Fülöp T, Lisak M, Kolesnichenko Y I and Anderson D 2000 *Physics of Plasmas* **7** 1479–1486 (Preprint <https://doi.org/10.1063/1.873967>) URL <https://doi.org/10.1063/1.873967>
- [36] Cook J W S, Dendy R O and Chapman S C 2013 *Plasma Physics and Controlled Fusion* **55** 065003 URL <http://stacks.iop.org/0741-3335/55/i=6/a=065003>
- [37] Carbajal L, Dendy R O, Chapman S C and Cook J W S 2014 *Physics of Plasmas* **21** 012106 URL <https://doi.org/10.1063/1.4861866>
- [38] Carbajal L, Dendy R O, Chapman S C and Cook J W S 2017 *Phys. Rev. Lett.* **118**(10) 105001 URL <https://link.aps.org/doi/10.1103/PhysRevLett.118.105001>
- [39] Reman B C G, Dendy R O, Akiyama T, Chapman S C, Cook J W S, Igami H, Inagaki S, Saito K and Yun G S 2016 *EPS Conference Proceedings* **P2.041** URL <http://ocs.ciemat.es/EPS2016PAP/pdf/P2.041.pdf>
- [40] Dendy R O, Reman B C G, Akiyama T, Chapman S C, Cook J W S, Igami H, Inagaki S, Saito K and Yun G S 2017 *EPS Conference Proceedings* **P5.145** URL <http://ocs.ciemat.es/EPS2017PAP/pdf/P5.145.pdf>
- [41] Yun G S, Lee W, Choi M J, Lee J, Park H K, Tobias B, Domier C W, Luhmann N C, Donné A J H and Lee J H (KSTAR Team) 2011 *Phys. Rev. Lett.* **107**(4) 045004 URL <https://link.aps.org/doi/10.1103/PhysRevLett.107.045004>
- [42] Leem J, Yun G S and Park H K 2012 *Journal of Instrumentation* **7** C01042 URL <http://stacks.iop.org/1748-0221/7/i=01/a=C01042>
- [43] Arber T D, Bennett K, Brady C S, Lawrence-Douglas A, Ramsay M G, Sircombe N J, Gillies P, Evans R G, Schmitz H, Bell A R and Ridgers C P 2015 *Plasma Physics and Controlled Fusion* **57** 1–26
- [44] Chapman B, Dendy R, McClements K, Chapman S, Yun G, Thatipamula S and Kim M 2017 *Nuclear Fusion* **57** 124004 URL <http://stacks.iop.org/0029-5515/57/i=12/a=124004>
- [45] Chapman B, Dendy R, Chapman S, McClements K, Yun G, Thatipamula S and Kim M 2018 *Nuclear Fusion* **58** 096027 URL <http://stacks.iop.org/0029-5515/58/i=9/a=096027>
- [46] Kim J Y, Rhee T, Kim J, Yoon S W, Park B H, Isobe M, Ogawa K and Ko W H 2016 *AIP Advances* **6** 105013
- [47] Kolesnichenko Y, Fülöp T, Lisak M and Anderson D 1998 *Nuclear Fusion* **38** 1871 URL <http://stacks.iop.org/0029-5515/38/i=12/a=311>
- [48] Kolesnichenko Y, Lisak M and Anderson D 2000 *Nuclear Fusion* **40** 1419 URL <http://stacks.iop.org/0029-5515/40/i=7/a=311>
- [49] Smith H, Flp T, Lisak M and Anderson D 2003 *Physics of Plasmas* **10** 1437–1442 URL <https://doi.org/10.1063/1.1566441>
- [50] Hellsten T and Laxback M 2003 *Physics of Plasmas* **10** 4371–4377 URL <https://doi.org/10.1063/1.1617315>
- [51] Hellsten T, Holmström K, Johnson T, Bergkvist T and Laxback M 2006 *Nuclear Fusion* **46** S442 URL <http://stacks.iop.org/0029-5515/46/i=7/a=S07>
- [52] Smith H M and Verwichte E 2009 *Plasma Physics and Controlled Fusion* **51** 075001 URL <http://stacks.iop.org/0741-3335/51/i=7/a=075001>
- [53] Gorelenkov N N and Cheng C Z 1995 *Physics of Plasmas* **2** 1961–1971 (Preprint <https://doi.org/10.1063/1.871281>) URL <https://doi.org/10.1063/1.871281>
- [54] Gorelenkov N N 2016 *Plasma Physics Reports* **42** 430–439 ISSN 1562-6938 URL <https://doi.org/10.1134/S1063780X16050044>
- [55] Hamilton B, McClements K, Fletcher L and Thyagaraja A 2003 *Solar Physics* **214** 339–352 ISSN 1573-093X URL <https://doi.org/10.1023/A:1024204928413>
- [56] Solov'ev L S 1968 *Sov. Phys.-JETP* **26** 400
- [57] Freidberg J P 1987 *Ideal magnetohydrodynamics* (New York: Plenum Press)
- [58] Birdsall C K and Langdon A B 1985 *Plasma Physics Via Computer* (New York, NY, USA: McGraw-Hill, Inc.) ISBN 0070053715
- [59] Bird T S 2009 *IEEE Antennas and Propagation Magazine* **51** 166–167 ISSN 1045-9243
- [60] Hawryluk R, Campbell D, Janeschitz G, Thomas P, Albanese R, Ambrosino R, Bachmann C, Baylor L, Becoulet M, Benfatto I, Bialek J, Boozer A, Brooks A, Budny R, Casper T, Cavinato M, Corder J J, Chuyanov V, Doyle E, Evans T, Federici G, Fenstermacher M, Fujieda H, G'ál K, Garofalo A, Garzotti L, Gates D, Gribov Y, Heitzenroeder P, Hender T, Holtkamp N, Humphreys D, Hutchinson I, Ioki K, Johnner J, Johnson

- G, Kamada Y, Kavin A, Kessel C, Khayrutdinov R, Kramer G, Kukushkin A, Lackner K, Landman I, Lang P, Liang Y, Linke J, Lipschultz B, Loarte A, Loesser G, Lowry C, Luce T, Lukash V, Maruyama S, Mattei M, Menard J, Merola M, Mineev A, Mitchell N, Nardon E, Nazikian R, Nelson B, Neumeyer C, Park J K, Pearce R, Pitts R, Polevoi A, Portone A, Okabayashi M, Rebut P, Riccardo V, Roth J, Sabbagh S, Saibene G, Sannazzaro G, Schaffer M, Shimada M, Sen A, Sips A, Skinner C, Snyder P, Stambaugh R, Strait E, Sugihara M, Tsitron E, Urano J, Valovic M, Wade M, Wesley J, White R, Whyte D, Wu S, Wykes M and Zakharov L 2009 *Nuclear Fusion* **49** 065012 URL <http://stacks.iop.org/0029-5515/49/i=6/a=065012>
- [61] Kessel C, Campbell D, Gribov Y, Saibene G, Ambrosino G, Budny R, Casper T, Cavinato M, Fujieda H, Hawryluk R, Horton L, Kavin A, Kharyutdinov R, Koechl F, Leuer J, Loarte A, Lomas P, Luce T, Lukash V, Mattei M, Nunes I, Parail V, Polevoi A, Portone A, Sartori R, Sips A, Thomas P, Welander A and Wesley J 2009 *Nuclear Fusion* **49** 085034 URL <http://stacks.iop.org/0029-5515/49/i=8/a=085034>
- [62] Cook J W S, Dendy R O and Chapman S C 2017 *Phys. Rev. Lett.* **118**(18) 185001 URL <https://link.aps.org/doi/10.1103/PhysRevLett.118.185001>
- [63] Cook J W S, Chapman S C, Dendy R O and Brady C S 2011 *Plasma Physics and Controlled Fusion* **53** 065006 URL <http://stacks.iop.org/0741-3335/53/i=6/a=065006>
- [64] Cook J W S, Dendy R O and Chapman S C 2011 *Plasma Physics and Controlled Fusion* **53** 074019 URL <http://stacks.iop.org/0741-3335/53/i=7/a=074019>
- [65] Cook J W S, Chapman S C and Dendy R O 2010 *Phys. Rev. Lett.* **105**(25) 255003 URL <https://link.aps.org/doi/10.1103/PhysRevLett.105.255003>
- [66] Gingell P W, Chapman S C, Dendy R O and Brady C S 2012 *Plasma Physics and Controlled Fusion* **54** 065005 URL <http://stacks.iop.org/0741-3335/54/i=6/a=065005>
- [67] Gingell P W, Chapman S C and Dendy R O 2013 *Plasma Physics and Controlled Fusion* **55** 055010 URL <http://stacks.iop.org/0741-3335/55/i=5/a=055010>
- [68] Gingell P W, Chapman S C and Dendy R O 2014 *Plasma Physics and Controlled Fusion* **56** 035012 URL <http://stacks.iop.org/0741-3335/56/i=3/a=035012>