

UKAEA-CCFE-PR(21)34

I. Svenningsson, O. Embreus, M. Hoppe, S. L.
Newton, T. Fülöp

The hot-tail runaway seed landscape during the thermal quench in tokamaks

Enquiries about copyright and reproduction should in the first instance be addressed to the UKAEA Publications Officer, Culham Science Centre, Building K1/O/83 Abingdon, Oxfordshire, OX14 3DB, UK. The United Kingdom Atomic Energy Authority is the copyright holder.

The contents of this document and all other UKAEA Preprints, Reports and Conference Papers are available to view online free at scientific-publications.ukaea.uk/

The hot-tail runaway seed landscape during the thermal quench in tokamaks

I. Svenningsson, O. Embreus, M. Hoppe, S. L. Newton, T. Fülöp

The hot-tail runaway seed landscape during the thermal quench in tokamaks

Ida Svenningsson,¹ Ola Embreus,¹ Mathias Hoppe,¹ Sarah L Newton,² and Tünde Fülöp¹

¹*Department of Physics, Chalmers University of Technology, SE-41296 Gothenburg, Sweden*

²*Culham Centre for Fusion Energy, Abingdon, Oxon OX14 3DB, UK*

Runaway electron populations seeded from the hot-tail generated by the rapid cooling in plasma-terminating disruptions are a serious concern for next-step tokamak devices such as ITER. Here, we present a comprehensive treatment of the thermal quench, including the superthermal electron dynamics, heat and particle transport, atomic physics, and radial losses due to magnetic perturbations: processes that are strongly linked and essential for the evaluation of the runaway seed in disruptions mitigated by material injection. We identify limits on the injected impurity density and magnetic perturbation level for which the runaway seed current is acceptable without excessive thermal energy being lost to the wall via particle impact. The consistent modelling of generation and losses shows that runaway beams tend to form near the edge of the plasma, where they could be deconfined via external perturbations.

One of the crucial problems facing magnetic fusion devices with large plasma currents is the occurrence of plasma-terminating disruptions [1]. Such events can result in a partial loss of magnetic confinement and a sudden cooling of the plasma. This *thermal quench* (TQ) is associated with an increase in the plasma resistivity and impedes current flow. As a result a strong inductive electric field arises, which can lead to runaway acceleration of electrons to relativistic energies [2–6].

Predictions show that a large part of the initial plasma current in ITER, and other high-current tokamaks, can thus be converted to a beam of energetic electrons [7, 8]. The current carried by a “seed” of runaway electrons is greatly amplified in an avalanche process, with a multiplication factor exponentially sensitive to the initial plasma current [2]. The subsequent uncontrolled loss of these electrons could lead to localized power deposition and damage of the plasma facing components (PFCs) [9].

The proposed disruption mitigation method in ITER is massive material injection, using a combination of deuterium and impurities [10, 11]. When injected in a pre-disruptive plasma, the impurity atoms can radiate away the stored thermal and magnetic energy, whilst the deuterium raises the critical electric field required for runaway. The mitigation system should be such that it provides sufficient radiation to reduce conductive losses during the TQ, to avoid damage on PFCs [9].

Material injection creates a two-component electron distribution, consisting of hot electrons from the original bulk Maxwellian population, and cold electrons ionized from the injected material [3, 4, 12]. The hot electrons lose energy due to the interaction with the cold population, but in rapidly cooling plasmas, due to the low collision frequency for fast electrons, a *hot-tail* often remains in the electron distribution [13]. Hot-tail generation is efficient in the early phase of the disruption, the TQ, when the temperature changes by orders of magnitude; in ITER, from tens of kiloelectronvolts (keVs) to a few eVs in a millisecond (ms). This hot-tail seed can be the dominant source of primary runaway electrons [14–

17], yet remains poorly modelled. The topology of the magnetic field confining the particles also changes and stochastic regions are formed, allowing rapid radial transport of runaway electrons [18–20]. Therefore, a large part of the hot-tail seed is expected to be deconfined.

Recent numerical studies indicate that assuming all hot-tail electrons remain in the plasma overestimates the final runaway current in experiments at ASDEX Upgrade [21, 22]. However, differences, for example due to size and initial plasma current, may be expected between disruption scenarios which can be studied on existing machines and those which would occur in ITER. Reliable predictions of the hot-tail seed generation during the rapid TQ, in particular accounting for the deconfinement of seed electrons, is needed to determine the runaway conversion in disruptions. Limitation of the runaway population by fluctuations during the subsequent avalanche has been studied previously [23, 24]. Self-consistent modelling of the transport, power balance and runaway generation is essential in the TQ, as these effects influence the TQ dynamics and the associated induced electric field, which in turn drives the runaway generation.

Here we present an integrated model of thermal quench dynamics, including hot-tail generation and losses due to magnetic perturbations, and use it to explore viable scenarios with combined deuterium and neon injection. We model the current evolution together with the magnetic field fluctuation induced energy and particle transport, as the injected material and bulk plasma evolve into a cold free electron population and hot population, with densities n_{cold} and n_{hot} , respectively.

The total current density is given by the sum of Ohmic, hot electron and runaway current densities: $j_{\parallel} = E\sigma_{\text{cold}} + \int_{|\mathbf{p}| < p_c} ev_{\parallel} f d\mathbf{p} + j_{\text{RE}}$, where σ_{cold} is the Spitzer conductivity, v_{\parallel} is the velocity parallel to the magnetic field, f is the superthermal (hot) electron distribution function, p_c the critical runaway momentum [25] and the runaway current is defined as $j_{\text{RE}} = \int_{p_c < |\mathbf{p}| < p_{\text{max}}} ev_{\parallel} f d\mathbf{p} + ecn_{\text{RE}}$. Here, n_{RE} is the density of electrons having momentum $p > p_{\text{max}}$ and E is the

electric field parallel to the magnetic field, which in the cylindrical approximation evolves at radius r according to

$$\mu_0 \frac{\partial j_{\parallel}}{\partial t} = \frac{1}{r} \frac{\partial}{\partial r} \left(r \frac{\partial E}{\partial r} \right). \quad (1)$$

The temperature of the cold electron population is determined from the associated energy density $W_{\text{cold}} = (3/2)n_{\text{cold}}T_{\text{cold}}$, which is evolved according to

$$\frac{\partial W_{\text{cold}}}{\partial t} = \sigma_{\text{cold}} E^2 - n_{\text{cold}} \sum_i \sum_{j=0}^{Z_i-1} n_i^{(j)} L_i^{(j)} (T_{\text{cold}}, n_{\text{cold}}) + Q_c + \frac{1}{r} \frac{\partial}{\partial r} \left[r D_W \frac{\partial T_{\text{cold}}}{\partial r} \right], \quad (2)$$

where $n_i^{(j)}$ is the number density of an ion with atomic number Z_i and charge number $Z_{0j} = j$, and $L_i^{(j)}$ the line radiation rates. The heat diffusion coefficient D_W is calculated by integrating the kinetic radial diffusion coefficient D over a Maxwellian corresponding to the cold electron population: $D_W = n_{\text{cold}} / (\pi^{3/2} m_e^3 v_T^3 T_{\text{cold}}) \int (m_e v^2 / 2) (v^2 / v_T^2 - 3/2) D(\mathbf{v}) \exp(-v^2 / v_T^2) d\mathbf{p}$, with $v_T = \sqrt{2T_{\text{cold}} / m_e}$ the thermal velocity of the cold electron population. The rate of collisional energy transfer $Q_c = \int \Delta \dot{E}_{ee} f d\mathbf{p} + \sum_i Q_{ei}$, where $\int \Delta \dot{E}_{ee} f d\mathbf{p}$ is the energy transfer from the hot electrons to cold free electrons, with $\Delta \dot{E}_{ee} = 4\pi n_{\text{cold}} r_0^2 \ln \Lambda_{ee} m_e c^4 / v$, r_0 the classical electron radius, and the sum is taken over ion species. The rate of collisional energy transfer between two Maxwellians is denoted $Q_{kl} = \langle nZ^2 \rangle_k \langle nZ^2 \rangle_l e^4 \ln \Lambda_{kl} [(2\pi)^{3/2} \epsilon_0^2 m_k m_l]^{-1} (T_k - T_l) (T_k / m_k + T_l / m_l)^{-3/2}$, with $\langle nZ^2 \rangle_k = \sum_{j=0}^{Z_k-1} Z_{0j}^2 n_k^{(j)}$ and the ion temperatures are evolved according to $(3/2) \partial (\langle nZ \rangle_i T_i) / \partial t = \sum_j Q_{ij}$.

The time evolution of the impurity species is described by $\partial n_i^{(j)} / \partial t = I_i^{(j-1)} n_i^{(j-1)} n_{\text{cold}} - I_i^{(j)} n_i^{(j)} n_{\text{cold}} + R_i^{(j+1)} n_i^{(j+1)} n_{\text{cold}} - R_i^{(j)} n_i^{(j)} n_{\text{cold}}$, where $I_i^{(j)}$ include the ionization rate and electron-impact ionization coefficients with the cold electrons, and $R_i^{(j)}$ are radiative recombination rates, obtained from OpenADAS [26]. The number density of cold electrons n_{cold} is such that the overall plasma is charge neutral, satisfying $\sum_i \sum_j Z_{0j} n_i^{(j)} = n_{\text{cold}} + n_{\text{RE}} + \int f d\mathbf{p}$ at all radii.

The superthermal electron dynamics is determined by the kinetic equation, which in radius, momentum and pitch coordinates (r, p, ξ) , where $v_{\parallel} = v\xi$, reads

$$\begin{aligned} \frac{\partial f}{\partial t} + eE \left(\frac{1}{p^2} \frac{\partial}{\partial p} [p^2 \xi f] + \frac{1}{p} \frac{\partial}{\partial \xi} [(1 - \xi^2) f] \right) \\ = \frac{1}{p^2} \frac{\partial}{\partial p} [p^3 \nu_s f] + \frac{\nu_D}{2} \frac{\partial}{\partial \xi} \left[(1 - \xi^2) \frac{\partial f}{\partial \xi} \right] \\ + \frac{1}{r} \frac{\partial}{\partial r} \left[r D \frac{\partial f}{\partial r} \right], \end{aligned} \quad (3)$$

where we neglect the energy-diffusion term, an assumption strictly valid only in the superthermal limit. Here

$\nu_s(p)$ and $\nu_D(p)$ are the slowing-down and deflection frequencies due to particle collisions [27].

The runaway density n_{RE} evolves according to

$$\frac{\partial n_{\text{RE}}}{\partial t} = F_p(p_{\text{max}}) + \frac{1}{r} \frac{\partial}{\partial r} \left[r D \frac{\partial n_{\text{RE}}}{\partial r} \right], \quad (4)$$

where the flux from the superthermal region into the runaway region is $F_p = 2\pi p^2 \int (eE\xi - p\nu_s) f d\xi$, integrated along the upper boundary of the domain representing the kinetic hot electrons, $p_{\text{max}} = 3m_e c$. As we focus on the generation of the hot-tail seed during the initial phase of the disruption (the TQ) we do not include here the runaway growth due to avalanche multiplication, which occurs on a longer time-scale.

We have taken the Rechester-Rosenbluth form for the coefficient $D = \pi q v_{\parallel} R (\delta B / B)^2$ [28] for simplicity, which assumes that the magnetic field is fully stochastic. Here, R is the major radius of the tokamak, $\pi q R$ represents the parallel scale length of the magnetic perturbation, and $\delta B / B$ is the normalized magnetic fluctuation amplitude, where in this work we assume the fluctuating field amplitude to be constant in space and time. Although such an assumption is not typical in the TQ, our results provide a bound on the perturbation level necessary to remove the hot-tail seed entirely. The precise details of the transport coefficient D are relatively unimportant to the present study; we present scans over its magnitude and are mainly concerned with its relative importance to the heat transport, and not the electron evolution in any specific magnetic field configuration.

The plasma model detailed here unifies and extends components that have appeared in previous studies. Atomic screening effects [27] and fast-electron transport [3] extend the kinetic equation beyond that in [12]. The electric-field and current evolution has been widely used, e.g. in Ref. [17, 25], but only recently in kinetic simulations [29]. The thermal-energy equation is fully charge-state resolved, as in the KPRAD model [30] or Ref. [25], and captures electron heat transport from field perturbations [28] and non-thermal electron heating [12].

In the following, we solve the coupled equations (1)-(4) with the DREAM code (Disruption Runaway Electron Analysis Model), with full capabilities described in [31], and present results for an ITER-like disruption with a combined deuterium and neon injection. The initial plasma is pure fully ionized deuterium with a pre-disruption electron density profile assumed to be uniform with a value of $n_{\text{hot}} = 10^{20} \text{ m}^{-3}$. (Due to the limited appearance of the ion mass, the 50/50 deuterium/tritium composition does not significantly alter the results.) The initial temperature profile of the electron and deuterium populations is given by $T(r) = 15 [1 - (r/a)^4] \text{ keV}$. The initial current density profile is assumed to be $j_{\parallel}(r) = j_0 [1 - (r/a)^4]^{3/2}$, with the normalization parameter j_0 chosen to give a total plasma current I_p . The major and

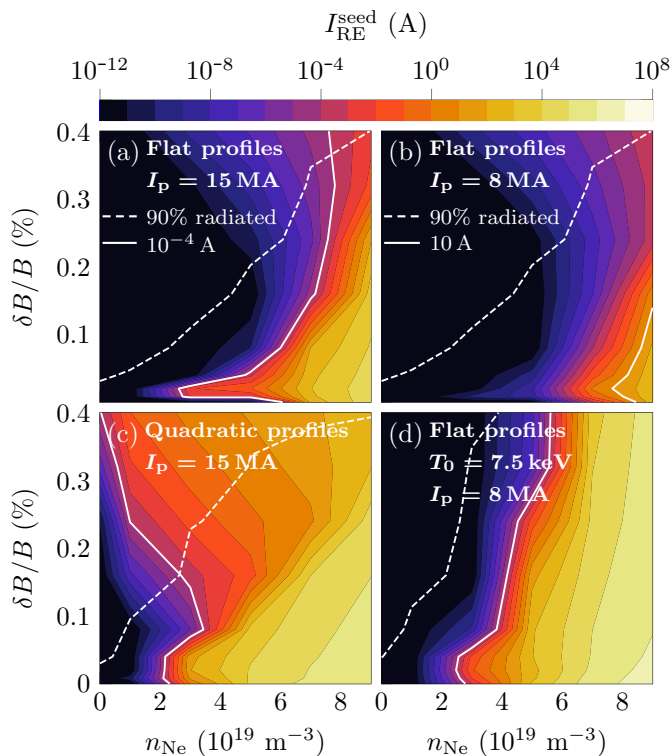


FIG. 1. Maximum seed runaway current as a function of injected neon density and normalized magnetic perturbation $\delta B/B$. The injected deuterium density is $n_D = 10^{21} \text{ m}^{-3}$. Injected deuterium and neon profiles assumed to be (a,b,d) flat and (c) quadratic $n_{\text{Ne/D}}(r) = n_{\text{Ne/D}} [2/11 + (18/11)(r/a)^2]$. Below the dashed lines the transport losses are acceptably low, and left of the solid lines the hot-tail seed is acceptably small. The initial central temperature is $T_0 = 15 \text{ keV}$ in (a,b,c).

minor radii are $R = 6.2 \text{ m}$ and $a = 2 \text{ m}$. Neutral neon and deuterium are introduced with a prescribed density profile and zero temperature at the start of the simulation.

In order to assess the operation space leading to acceptable hot tail generation, in Fig. 1 we present scans over injected impurity density and perturbation level, using the Rechester-Rosenbluth transport model with a radially constant magnetic perturbation (taking $q \approx 1$). Each point in the plane corresponds to a TQ simulation, with constant prescribed profiles of total impurity density and $\delta B/B$. Colors indicate the maximum runaway current reached during the simulation. To avoid significant avalanche generation, the runaway seed current must be lower than 10 A in the 8 MA case and 10^{-4} A in the 15 MA case [25]. These limits are indicated (for dominant hot-tail seed) with solid lines. To avoid damage to the first wall, at least 90% of the thermal energy loss must come from radiation [9]. This gives an upper limit on how strong the transport can be, which has been indicated with a dashed line under the assumption that all kinetic energy transported through the edge of the plasma will

strike the wall.

Figure 1 shows that there is a region in parameter space with moderate injected impurity density and radial transport (between the solid and dashed lines), which gives acceptable hot-tail generation and non-radiative heat transport to the first wall. Simulations with only neon injection (not shown) indicate a very restricted acceptable operating space, due to a lower radiated fraction. For lower initial plasma current the parameter region widens, as shown in Fig. 1(b), i.e. greater impurity injection can be allowed, mainly due to the increased acceptable seed currents.

Non-uniform impurity deposition profiles are likely to arise in realistic material injection scenarios. They can reduce the heat transported to the wall, as radiation losses scale quadratically with plasma density while transport scales only linearly. Therefore, in Fig. 1(c) we investigate the effect of density profiles taking the form $n_{\text{Ne/D}}(r) = n_{\text{Ne/D}} [2/11 + (18/11)(r/a)^2]$, chosen so the edge impurity density is ten times higher than that at the center, and the total number of ions corresponds to flat profiles at the constant values n_{Ne} and n_{D} . This quadratic profile moderately widens the parameter region of tolerable transport losses (see the shift in the dashed line), however a significant increase in runaway current is observed, especially in the high- $\delta B/B$ region. This increase of the runaway current due to transport is caused by the low density in the center of the plasma, allowing fast electrons to persist due to the lower collisionality. When these core electrons are transported to the cool edge – where electric fields are stronger – they can be accelerated as runaways.

Figure 1(d) illustrates the case with a lower initial temperature, in which case hot-tail generation is more efficient (cf. Fig. 1(b)). This counter-intuitive result agrees with earlier findings [12], and is due to the fact that in disruptions dominated by radiation losses the TQ time decreases faster with temperature than the collision time. Thus, strong electric fields capable of accelerating runaways are generated before the hot-tail has had time to slow down.

To understand in detail the basic dynamics of a TQ triggered by material injection, we show the evolution of temperature, electric field and current in Fig. 2. The two upper panels show the cold electron temperature and induced electric field at different radial positions. In the two lower panels we compare the effect of radial transport on the radial evolution of the cold electron temperature and hot and runaway electron current densities. In Figs. 2(c,e) no radial transport was assumed ($D = 0$), and in Figs. 2(d,f) $\delta B/B = 0.16\%$. According to magnetohydrodynamic (MHD) simulations of disruptions induced by material injection in the JET tokamak, the normalized perturbation amplitude during the TQ can be around $\delta B/B \simeq 1\%$ or higher [19]. The choice $\delta B/B = 0.16\%$ is a conservative estimate, giv-

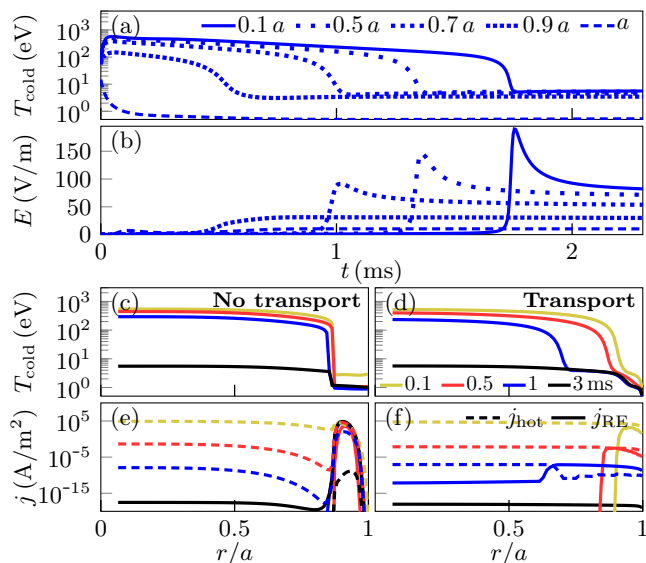


FIG. 2. Simulation of an ITER-like disruption with initial plasma current $I_p = 15$ MA and injected deuterium and neon densities $n_D = 10^{21} \text{ m}^{-3}$ and $n_{Ne} = 9 \times 10^{19} \text{ m}^{-3}$, respectively. Injected deuterium and neon profiles assumed to be flat and in (a,b) $\delta B/B = 0.16\%$. (a) Cold electron temperature as a function of time at five different radii. (b) Induced electric field at the same radial positions as in (a). (c,d) Cold electron temperature as a function of radius at four different times. (e,f) Hot (dashed) and runaway (solid) current density profiles at the same times as in (c,d). (c,e) $\delta B/B = 0$, (d,f) $\delta B/B = 0.16\%$.

ing a characteristic transport time of runaways $t_d = a^2/D = a^2/[\pi cR(\delta B/B)^2] \approx 0.3$ ms. The energy confinement time is a few ms, which is of the same order of magnitude as the estimated TQ time in ITER [6].

The initial electron distribution function is a Maxwellian, carrying the initial density and temperature. The injected material is ionized by the interaction with the hot plasma, cools the plasma due to line radiation, and provides additional background electrons that are initially cold, but are heated via collisional energy exchange with the hot population, which quickly slows down as the plasma cools due to radiation. At low temperatures Ohmic heating and radiation losses dominate, and when in balance they support a stable equilibrium temperature typically in the 5-20 eV range. In such regions the electric field tends to be strong, allowing efficient runaway acceleration and as a consequence radially localized current sheets may arise [16, 32, 33]. Near the plasma edge, due to the lower current density and initial temperature, the background electrons enter the cold equilibrium near 5 eV at the beginning of the TQ. Meanwhile, in the core of the plasma, Ohmic heating and energy transfer from hot electrons can heat the background to hundreds of eV, which can be sustained for multiple ms before the cold equilibrium is ultimately reached. A strong electric field is then induced, as illustrated in Fig. 2(b). This occurs first at the edge, and

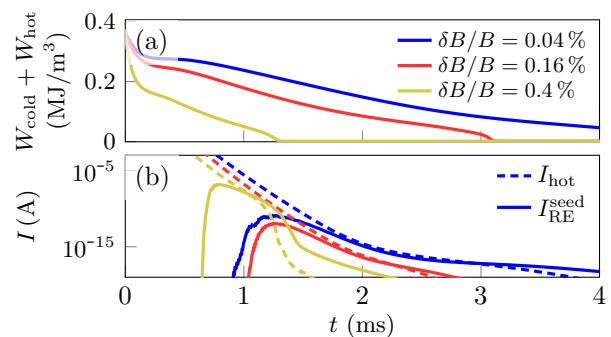


FIG. 3. (a) Electron energy density and (b) current for $\delta B/B = 0.04\%$ (blue), $\delta B/B = 0.16\%$ (red) and $\delta B/B = 0.4\%$ (yellow) and injected densities $n_D = 10^{21} \text{ m}^{-3}$, $n_{Ne} = 5 \times 10^{19} \text{ m}^{-3}$.

propagates inwards as the cold front reaches the central parts of the plasma.

Figures 2(e,f) show the radial evolution of the plasma current. The initial current carried by hot electrons is rapidly converted to Ohmic current carried by the cold background plasma as the hot electrons are slowed down by collisions. The hot-tail electrons that are accelerated by the electric field and enter the runaway region are shown with solid lines. Radial transport of electrons in stochastic fields causes the central temperature to reach the cold equilibrium point at an earlier time, causing an earlier onset of strong electric fields and subsequent increased runaway acceleration. Note that the first runaway acceleration occurs at the outer radii, which might lead to hollow runaway density profiles. The reduction in the maximum runaway current density j_{RE} in Fig. 2(f) compared to Fig. 2(e) is due to the transport by magnetic perturbations. This indicates that inducing strong edge fluctuations can be useful in mitigating the runaway population produced by the strong edge cooling.

The simulations also show that the maximum runaway current varies non-monotonically with magnetic perturbation $\delta B/B$. This is illustrated in Fig. 3, where we show examples of the energy density $W_{\text{cold}} + W_{\text{hot}}$ and current evolution for three different values of $\delta B/B$, where $W_{\text{hot}} = \int (\gamma - 1) m_e c^2 f dp$. With the two lower values, $\delta B/B = 0.04\%$ (blue) and 0.16% (red), the runaway current (solid) peaks at similar times, but since more hot particles remain in the plasma when $\delta B/B = 0.04\%$, this case results in a higher peak value. The highest value $\delta B/B = 0.4\%$ results in the shortest TQ (yellow line in Fig. 3(a)), which causes an earlier rise in the electric field and earlier runaway acceleration. Previous predictions have suggested that the hot-tail seed would decrease monotonically with TQ duration [34]. Our results indicate that the interplay between fast-electron transport and temperature evolution must be considered carefully in order to predict the seed current.

Reduced MHD simulations [18] indicate natural disruption activity gives fluctuations peaked in the core. Such radially varying magnetic perturbations give quan-

titative differences, reducing the acceptable parameter space, but the hot-tail landscape is similar. As expected, the runaway seed is larger if the $\delta B/B$ radial profile is peaked at the core. Optimising the net profile by externally applied perturbations, exploring transport coefficients motivated by the MHD simulations, provides a potential route to identify robust operation spaces.

In this work, we assumed instantaneous deposition of the injected material, valid when the deposition time-scale is much shorter than the time-scale of plasma cooling, which is often the case in pellet injection experiments in medium-sized devices [35]. When the time scales are comparable, which is the case for larger devices such as ITER (traversing a 2 m radius in 2 ms requires a 1 km/s pellet speed, much higher than the few hundreds of m/s foreseen [36]), the model presented here should be complemented by an impurity injection model, such as pellet ablation. The resulting non-uniform cooling as the pellet crosses the plasma has implications for the limits on impurity density and perturbation level, as we have illustrated with the non-uniform deposition profile. However, in those cases where alarming runaway currents are predicted, they tend to form near the edge of the plasma, where they can more easily be deconfined by e.g. external perturbations [24, 37] during the current quench. A potentially important effect not addressed here is the MHD stability of such current profiles, that might lead to safe termination [38].

In summary, in studies enabled by the efficient numerical solver DREAM, we show that in the case of moderate impurity and deuterium injection, radial transport caused by magnetic fluctuations during the TQ should allow for efficient losses of hot-tail seed runaways in ITER-like disruptions, without producing excessive heat loads on the first wall. The cutoff value of impurity density below which the runaway current is acceptable depends on the material deposition profile, the pre-quench temperature, as well as the possibility of exciting magnetic perturbations.

The authors are grateful to E. Nardon, I. Pusztai, G. Papp and the rest of the Plasma Theory group for fruitful discussions. This work was supported by the European Research Council (ERC) under the European Union's Horizon 2020 research and innovation programme (ERC-2014-CoG grant 647121) and the Swedish Research Council (Dnr. 2018-03911).

[1] T. Hender, J. Wesley, J. Biela, A. Bondeson, A. Boozer, R. Buttery, A. Garofalo, T. Goodman, R. Granetz, Y. Gribov, O. Gruber, M. Gryaznevich, G. Giruzzi, S. Günter, N. Hayashi, P. Helander, C. Hegna,

D. Howell, D. Humphreys, G. Huysmans, A. Hyatt, A. Isayama, S. Jardin, Y. Kawano, A. Kellman, C. Kessel, H. Koslowski, R. L. Haye, E. Lazarro, Y. Liu, V. Lukash, J. Manickam, S. Medvedev, V. Mertens, S. Mirnov, Y. Nakamura, G. Navratil, M. Okabayashi, T. Ozeki, R. Paccagnella, G. Pautasso, F. Porcelli, V. Pustovitov, V. Riccardo, M. Sato, O. Sauter, M. Schaffer, M. Shimada, P. Sonato, E. Strait, M. Sugihara, M. Takechi, A. Turnbull, E. Westerhof, D. Whyte, R. Yoshino, H. Zohm, and the ITPA MHD, Disruption & Magnet Group, *Nuclear Fusion* **47**, S128 (2007).

[2] M. Rosenbluth and S. Putvinski, *Nuclear Fusion* **37**, 1355 (1997).

[3] S. Chiu, M. Rosenbluth, R. Harvey, and V. Chan, *Nuclear Fusion* **38**, 1711 (1998).

[4] R. W. Harvey, V. S. Chan, S. C. Chiu, T. E. Evans, M. N. Rosenbluth, and D. G. Whyte, *Physics of Plasmas* **7**, 4590 (2000).

[5] A. H. Boozer, *Physics of Plasmas* **22**, 032504 (2015).

[6] B. N. Breizman, P. Aleynikov, E. M. Hollmann, and M. Lehnen, *Nuclear Fusion* **59**, 083001 (2019).

[7] A. H. Boozer, *Nuclear Fusion* **58**, 036006 (2018).

[8] R. Sweeney, A. J. Creely, J. Doody, T. Fülöp, D. T. Garnier, R. Granetz, M. Greenwald, L. Hesslow, J. Irby, V. A. Izzo, R. J. L. Haye, N. C. Logan, K. Montes, C. Paz-Soldan, C. Rea, R. A. Tinguely, O. Vallhagen, and J. Zhu, *Journal of Plasma Physics* **86**, 865860507 (2020).

[9] M. Lehnen, K. Aleynikova, P. Aleynikov, D. Campbell, P. Drewelow, N. Eidietis, Y. Gasparyan, R. Granetz, Y. Gribov, N. Hartmann, E. Hollmann, V. Izzo, S. Jachimich, S.-H. Kim, M. Kočan, H. Koslowski, D. Kovalenko, U. Kruezi, A. Loarte, S. Maruyama, G. Matthews, P. Parks, G. Pautasso, R. Pitts, C. Reux, V. Riccardo, R. Roccella, J. Snipes, A. Thornton, and P. de Vries, *Journal of Nuclear Materials* **463**, 39 (2015).

[10] E. M. Hollmann, P. B. Aleynikov, T. Fülöp, D. A. Humphreys, V. A. Izzo, M. Lehnen, V. E. Lukash, G. Papp, G. Pautasso, F. Saint-Laurent, and J. A. Snipes, *Physics of Plasmas* **22**, 021802 (2015).

[11] E. Nardon, D. Hu, M. Hoelzl, D. Bonfiglio, and the JOREK team, *Nuclear Fusion* **60**, 126040 (2020).

[12] P. Aleynikov and B. N. Breizman, *Nuclear Fusion* **57**, 046009 (2017).

[13] P. Helander, H. Smith, T. Fülöp, and L.-G. Eriksson, *Physics of Plasmas* **11**, 5704 (2004).

[14] H. Smith, P. Helander, L.-G. Eriksson, and T. Fülöp, *Physics of Plasmas* **12**, 122505 (2005).

[15] H. M. Smith and E. Verwichte, *Physics of Plasmas* **15**, 072502 (2008).

[16] T. Fehér, H. M. Smith, T. Fülöp, and K. Gál, *Plasma Physics and Controlled Fusion* **53**, 035014 (2011).

[17] J. Martín-Solís, A. Loarte, and M. Lehnen, *Nuclear Fusion* **57**, 066025 (2017).

[18] V. Izzo, E. Hollmann, A. James, J. Yu, D. Humphreys, L. Lao, P. Parks, P. Sieck, J. Wesley, R. Granetz, G. Olynyk, and D. Whyte, *Nuclear Fusion* **51**, 063032 (2011).

[19] K. Särkimäki, O. Embreus, E. Nardon, T. Fülöp, and JET contributors, *Nuclear Fusion* **60**, 126050 (2020).

[20] D. Hu, E. Nardon, M. Hoelzl, F. Wieschollek, M. Lehnen, G. Huijmsmans, D. C. van Vugt, S.-H. Kim, JET contributors, and JOREK team, *Nuclear Fusion* **61**, 026015

- (2021).
- [21] K. Insulander Björk, O. Vallhagen, G. Papp, O. Embréus, E. Rachlew, T. Fülöp, the ASDEX Upgrade Team, the JET contributors, and the EUROfusion MST1 Team, *Submitted to Plasma Physics and Controlled Fusion* (2021).
- [22] M. Hoppe, L. Hesslow, O. Embreus, L. Unnerfelt, G. Papp, I. Pusztai, T. Fülöp, O. Lexell, T. Lunt, E. Marcusova, the ASDEX Upgrade team, and the EUROfusion MST1 team, *Journal of Plasma Physics* **87**, 855870102 (2021).
- [23] P. Helander, L.-G. Eriksson, and F. Andersson, *Physics of Plasmas* **7**, 4106 (2000).
- [24] P. Svensson, O. Embreus, S. L. Newton, K. Särkimäki, O. Vallhagen, and T. Fülöp, *Journal of Plasma Physics* **87**, 905870207 (2021).
- [25] O. Vallhagen, O. Embreus, I. Pusztai, L. Hesslow, and T. Fülöp, *Journal of Plasma Physics* **86**, 475860401 (2020).
- [26] H. P. Summers, “The ADAS user manual, version 2.6,” <http://www.adas.ac.uk> (2004).
- [27] L. Hesslow, O. Embréus, M. Hoppe, T. DuBois, G. Papp, M. Rahm, and T. Fülöp, *Journal of Plasma Physics* **84**, 905840605 (2018).
- [28] A. B. Rechester and M. N. Rosenbluth, *Phys. Rev. Lett.* **40**, 38 (1978).
- [29] R. Harvey, Y. V. Petrov, C. C. Kim, C. Forest, L. Lao, and P. Parks, *Nuclear Fusion* **59**, 106046 (2019).
- [30] D. Whyte and T. Jernigan, *Energy balance, radiation and stability during rapid plasma termination via impurity pellet injections on DIII-D*, Tech. Rep. (General Atomics, San Diego, CA (United States); Oak Ridge National Lab., TN, 1997).
- [31] M. Hoppe, O. Embreus, and T. Fülöp, *Submitted to Computer Physics Communications*, ArXiv 2103.16457 (2021), <https://github.com/chalmersplasmatheory/DREAM>.
- [32] S. Putvinski, N. Fujisawa, D. Post, N. Putvinskaya, M. Rosenbluth, and J. Wesley, *Journal of Nuclear Materials* **241-243**, 316 (1997).
- [33] L.-G. Eriksson, P. Helander, F. Andersson, D. Anderson, and M. Lisak, *Phys. Rev. Lett.* **92**, 205004 (2004).
- [34] H. M. Smith, T. Fehér, T. Fülöp, K. Gál, and E. Verwichte, *Plasma Physics and Controlled Fusion* **51**, 124008 (2009).
- [35] C. Paz-Soldan, P. Aleynikov, E. Hollmann, A. Lvovskiy, I. Bykov, X. Du, N. Eidietis, and D. Shiraki, *Nuclear Fusion* **60**, 056020 (2020).
- [36] L. Baylor, C. C. Barbier, J. R. Carmichael, S. K. Combs, M. N. Ericson, N. D. B. Ezell, P. W. Fisher, M. S. Lyttle, S. J. Meitner, D. A. Rasmussen, S. F. Smith, J. B. Wilgen, S. Maruyama, and G. Kiss, *Fusion Science and Technology* **68**, 211 (2015).
- [37] H. M. Smith, A. H. Boozer, and P. Helander, *Physics of Plasmas* **20**, 072505 (2013).
- [38] C. Reux, C. Paz-Soldan, P. Aleynikov, V. Bandaru, O. Ficker, S. Silburn, M. Hoelzl, S. Jachmich, N. Eidietis, M. Lehnen, S. Sridhar, and JET contributors, *Phys. Rev. Lett.* **126**, 175001 (2021).